

Recombinant Human EphA4 Protein

Catalog Number:PKSH032008



Note: Centrifuge before opening to ensure complete recovery of vial contents.

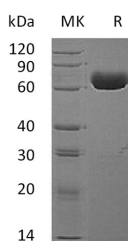
Description

Synonyms	Ephrin type-A receptor 4;HEK8;SEK;TYRO1;EPHA4;Tyrosine-protein kinase receptor SEK;Tyrosine-protein kinase TYRO1;EK8;hEK8;EPH-like kinase 8
Species	Human
Expression Host	HEK293 Cells
Sequence	Val20-Thr547
Accession	P54764
Calculated Molecular Weight	59.2 kDa
Observed molecular weight	60-80 kDa
Tag	None

Properties

Purity	> 95 % as determined by reducing SDS-PAGE.
Endotoxin	< 1.0 EU per µg of the protein as determined by the LAL method.
Storage	Generally, lyophilized proteins are stable for up to 12 months when stored at -20 to -80°C. Reconstituted protein solution can be stored at 4-8°C for 2-7 days. Aliquots of reconstituted samples are stable at < -20°C for 3 months.
Shipping	This product is provided as lyophilized powder which is shipped with ice packs.
Formulation	Lyophilized from a 0.2 µm filtered solution of PBS, pH 7.4. Normally 5 % - 8 % trehalose, mannitol and 0.01% Tween80 are added as protectants before lyophilization. Please refer to the specific buffer information in the printed manual.
Reconstitution	Please refer to the printed manual for detailed information.

Data



> 95 % as determined by reducing SDS-PAGE.

Background

Ephrin type-A receptor 4(EPHA4) belongs to the protein kinase superfamily and Ephrin receptor subfamily. EPHA4 contains 1 Eph LBD domain; 2 fibronectin type-III domains; 1 protein kinase domain and 1 SAM domain. EPH and EPH-related receptors have been implicated in mediating developmental events; particularly in the nervous system. Receptors in the EPH subfamily typically have a single kinase domain and an extracellular region containing a Cys-rich domain and 2 fibronectin type III repeats. The ephrin receptors are divided into 2 groups based on the similarity of their extracellular domain sequences and their affinities for binding ephrin-A and ephrin-B ligands.

For Research Use Only

A Reliable Research Partner in Life Science and Medicine

Toll-free: 1-888-852-8623

Web: www.elabscience.com

Tel: 1-832-243-6086

Email: techsupport@elabscience.com

Fax: 1-832-243-6017