

PE/Cyanine7 Anti-Human IgM Antibody[MHM-88]

Catalog Number: E-AB-F1172H

Note: Centrifuge before opening to ensure complete recovery of vial contents.

Description

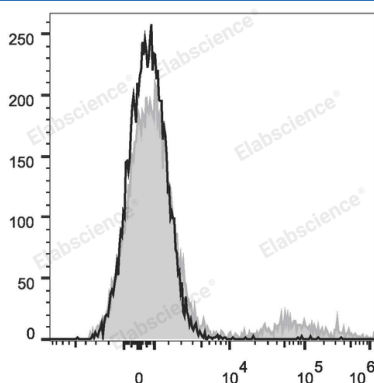
Reactivity	Human
Host	Mouse
Isotype	Mouse IgG1, κ
Clone No.	MHM-88
Isotype Control	PE/Cyanine7 Mouse IgG1, κ Isotype Control[MOPC-21] [Product E-AB-F09792H]
Conjugation	PE/Cyanine 7
Conjugation Information	PE/Cyanine7 is designed to be excited by the Blue (488 nm), Green (532 nm) and yellow-green (561 nm) lasers and detected using an optical filter centered near 775 nm (e.g., a 780/60 nm bandpass filter).
Storage Buffer	Phosphate buffered solution, pH 7.2, containing 0.09% stabilizer.

Applications

Recommended usage

FCM	Each lot of this antibody is quality control tested by flow cytometric analysis. The amount of the reagent is suggested to be used 5 μL of antibody per test (million cells in 100 μL staining volume or per 100 μL of whole blood). Please check your vial before the experiment. Since applications vary, the appropriate dilutions must be determined for individual use.
------------	---

Data



Human peripheral blood lymphocytes are stained with PE/Cyanine7 Anti-Human IgM Antibody (filled gray histogram) or Mouse IgG1 Isotype Control PE/Cyanine7 (empty black histogram).

Preparation & Storage

Storage	Keep as concentrated solution. This product can be stored at 2-8°C for 24 months. Please protected from prolonged exposure to light and do not freeze.
Shipping	Ice bag

Antigen Information

Alternate Names	IGHM;Immunoglobulin M;Immunoglobulin heavy constant mu
Uniprot ID	P01871
Gene ID	3507

For Research Use Only

Background

IgM is the first immunoglobulin made by B cells in the immune response. Surface IgM is expressed on immature and mature B cells, while IgM heavy (μ) chain is expressed intracellularly in pre-B cells.