

## CDADC1 Polyclonal Antibody

**catalog number: E-AB-52528**

**Note:** Centrifuge before opening to ensure complete recovery of vial contents.

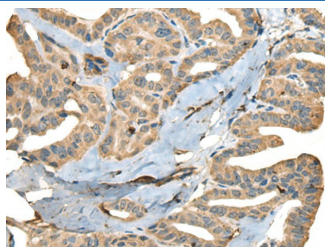
### Description

<b>Reactivity</b>	Human
<b>Immunogen</b>	Full length fusion protein
<b>Host</b>	Rabbit
<b>Isotype</b>	IgG
<b>Purification</b>	Antigen affinity purification
<b>Buffer</b>	Phosphate buffered solution, pH 7.4, containing 0.05% stabilizer and 50% glycerol.

### Applications

Applications	Recommended Dilution
IHC	1:30-1:150

### Data



Immunohistochemistry of paraffin-embedded Human thyroid cancer tissue using CDADC1 Polyclonal Antibody at dilution of 1:40(×200)

### Preparation & Storage

<b>Storage</b>	Store at -20°C Valid for 12 months. Avoid freeze / thaw cycles.
<b>Shipping</b>	The product is shipped with ice pack, upon receipt, store it immediately at the temperature recommended.

### Background

NYD-SP15 (testis development protein NYD-SP15), also known as CDADC1 (cytidine and dCMP deaminase domain containing 1), is a widely expressed protein with predominant expression in the testis, liver, spleen, kidney, thymus and placenta. NYD-SP15 is 514 amino acids in length and belongs to the cytidine and deoxycytidylate deaminase family. It is developmentally regulated with higher expression in adult testis than fetal testis and is believed to participate in spermatogenesis and testicular development. This suggests that NYD-SP15 may be a determining factor in male infertility. Due to alternative splicing events, four transcript variants exist for NYD-SP15.

### For Research Use Only