

Elab Fluor® 700 Anti-Human CD235 Antibody[HIR2]

Catalog Number: E-AB-F1080M1

Note: Centrifuge before opening to ensure complete recovery of vial contents.

Description

Reactivity	Human
Host	Mouse
Isotype	Mouse IgG2b, κ
Clone No.	HIR2
Isotype Control	Elab Fluor® 700 Mouse IgG2b, κ Isotype Control[MPC-11] [Product E-AB-F09812M1]
Conjugation	Elab Fluor® 700
Conjugation Information	Elab Fluor® 700 is designed to be excited by the Red laser (627-640 nm) and detected using an optical filter centered near 719 nm (e.g., a 725/40 nm bandpass filter).
Storage Buffer	Phosphate buffered solution, pH 7.2, containing 0.09% sodium azide and 1% BSA.

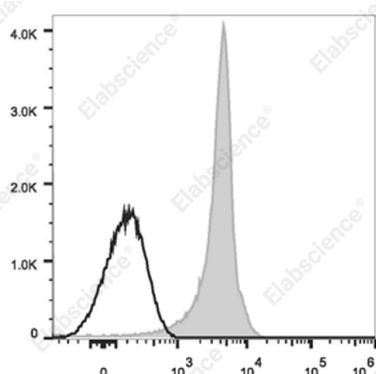
Applications

Recommended usage

FCM

Each lot of this antibody is quality control tested by flow cytometric analysis. **The amount of the reagent is suggested to be used 5 μL of antibody per test (million cells in 100 μL staining volume or per 100 μL of whole blood).** Please check your vial before the experiment. Since applications vary, the appropriate dilutions must be determined for individual use.

Data



Staining of Human peripheral red blood cells with Elab Fluor

® 700 Anti-Human CD235 Antibody[HIR2] (filled gray histogram) or Elab Fluor® 700 Mouse IgG2b,κ Isotype Control (empty black histogram). Cells in the erythrocytes gate were used for analysis.

Preparation & Storage

Storage	Keep as concentrated solution. This product can be stored at 2-8°C for 12 months. Please protected from prolonged exposure to light and do not freeze.
Shipping	Ice bag

Antigen Information

Alternate Names	CD235a/b;GYPA/B;Glycophorin-A/B;MN sialoglycoprotein;PAS-2/3;SS-active sialoglycoprotein;Sialoglycoprotein alpha/delta
Uniprot ID	P02724;P06028;

For Research Use Only

Gene ID

2993

Background

The HIR2 antibody reacts with a common epitope of glycoprotein A (CD235a) and glycoprotein B (CD235b). Glycoprotein A is the major sialoglycoprotein expressed on red blood cell membrane, and erythroid precursors. Glycoprotein A shares strong homology with glycoprotein B. The HIR2 antibody recognizes human RBCs and erythroid precursors and is useful in erythroid cell development studies. Mature, non-nucleated red blood cells are characteristically glycoprotein A positive, but CD45 and CD71 negative.