

# Recombinant Human ICAM-1/CD54 Protein (His Tag)

Catalog Number: PDMH100366



**Note:** Centrifuge before opening to ensure complete recovery of vial contents.

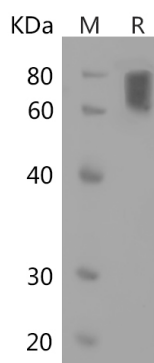
## Description

<b>Species</b>	Human
<b>Source</b>	HEK293 Cells-derived Human ICAM-1 protein Gln28-Glu480, with an C-terminal His
<b>Mol_Mass</b>	50.5 kDa
<b>Accession</b>	P05362
<b>Bio-activity</b>	Not validated for activity

## Properties

<b>Purity</b>	> 95% as determined by reducing SDS-PAGE.
<b>Endotoxin</b>	< 1.0 EU/mg of the protein as determined by the LAL method
<b>Storage</b>	Generally, lyophilized proteins are stable for up to 12 months when stored at -20 to -80 °C. Reconstituted protein solution can be stored at 4-8°C for 2-7 days. Aliquots of reconstituted samples are stable at < -20°C for 3 months.
<b>Shipping</b>	This product is provided as lyophilized powder which is shipped with ice packs.
<b>Formulation</b>	Lyophilized from a 0.2 µm filtered solution in PBS with 5% Trehalose and 5% Mannitol.
<b>Reconstitution</b>	It is recommended that sterile water be added to the vial to prepare a stock solution of 0.5 mg/mL. Concentration is measured by UV-Vis.

## Data



> 95 % as determined by reducing SDS-PAGE.

## Background

Inter-Cellular Adhesion Molecule 1 (ICAM1) is a type of intercellular adhesion molecule continuously present in low concentrations in the membranes of leukocytes and endothelial cells. As an endothelial and leukocyte-associated transmembrane protein, ICAM1 is well known for its importance in stabilizing cell-cell interactions and facilitating leukocyte endothelial transmigration. The presence of heavy glycosylation and other structural characteristics lend ICAM1 binding sites for a number of immune-associated ligands. Notably, ICAM-1 binds to macrophage adhesion ligand-1 (Mac-1, ITGB2 / ITGAM), leukocyte function associated antigen-1 (LFA-1/integrin), and fibrinogen. ICAM-1 expressed by respiratory epithelial cells is also the binding site for rhinovirus, the causative agent of most common colds.

## For Research Use Only

A Reliable Research Partner in Life Science and Medicine  
Tel: 400-999-2100

Email: [techsupport@elabscience.cn](mailto:techsupport@elabscience.cn)

Web: [www.elabscience.cn](http://www.elabscience.cn)

Rev. V1.3