

## HES7 Polyclonal Antibody

catalog number: **E-AB-18076**

**Note:** Centrifuge before opening to ensure complete recovery of vial contents.

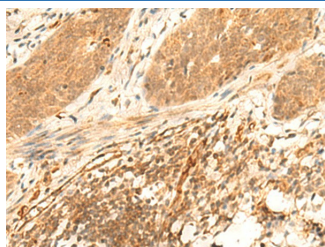
### Description

<b>Reactivity</b>	Human;Mouse
<b>Immunogen</b>	Synthetic peptide of human HES7
<b>Host</b>	Rabbit
<b>Isotype</b>	IgG
<b>Purification</b>	Antigen affinity purification
<b>Buffer</b>	Phosphate buffered solution, pH 7.4, containing 0.05% stabilizer and 50% glycerol.

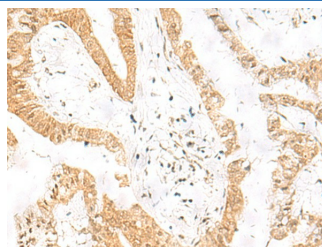
### Applications Recommended Dilution

<b>IHC</b>	1:30-1:150
------------	------------

### Data



Immunohistochemistry of paraffin-embedded Human esophagus cancer tissue using HES7 Polyclonal Antibody at dilution of 1:25(×200)



Immunohistochemistry of paraffin-embedded Human liver cancer tissue using HES7 Polyclonal Antibody at dilution of 1:25(×200)

### Preparation & Storage

<b>Storage</b>	Store at -20°C Valid for 12 months. Avoid freeze / thaw cycles.
<b>Shipping</b>	The product is shipped with ice pack, upon receipt, store it immediately at the temperature recommended.

### Background

This gene encodes a member of the hairy and enhancer of split family of bHLH transcription factors. The mouse ortholog of this gene is regulated by Notch signaling. The protein functions as a transcriptional repressor, and is implicated in correct patterning of the axial skeleton. A mutation in this gene has been shown to result in spondylocostal dysostosis. Multiple transcript variants encoding different isoforms have been found for this gene.

### For Research Use Only