

AF/LE Purified Anti-Human CD147 Antibody[HIM6]

Catalog Number: GF10560

Note: Centrifuge before opening to ensure complete recovery of vial contents.

Description

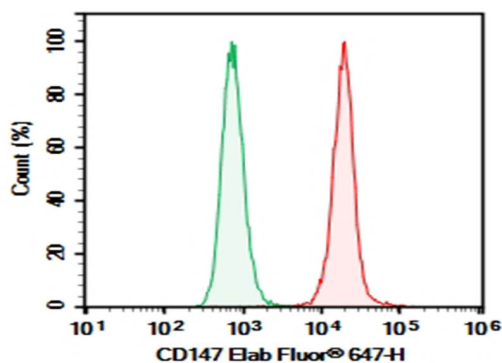
Reactivity	Human
Immunogen	Recombinant Human CD147 protein
Host	Mouse
Isotype	Mouse IgG1, κ
Clone	HIM6
Purification	>98%, Protein A/G purified
Conjugation	None (AF/LE)
Buffer	Sterile PBS, pH 7.2. < 1.0 EU per mg of the antibody as determined by the LAL method.

Applications

Recommended Dilution

FCM	2 μ g/mL (0.5 \times 10 ⁶ -1 \times 10 ⁶ cells)
------------	---

Data



Human peripheral blood granulocytes cell were stained with 0.2 μ g AF/LE Purified Anti-Human CD147 Antibody[HIM6] (Right) and 0.2 μ g Mouse IgG1, κ Isotype Control (Left), followed by Elab Fluor® 647-conjugated Goat Anti-Mouse IgG Secondary Antibody.

Preparation & Storage

Storage	Store at 4°C valid for 12 months or -20°C valid for long term storage, avoid freeze / thaw cycles. This preparation contains no preservatives, thus it should be handled under aseptic conditions.
Shipping	Ice bag

Background

The protein encoded by this gene is a plasma membrane protein that is important in spermatogenesis, embryo implantation, neural network formation, and tumor progression. The encoded protein is also a member of the immunoglobulin superfamily. Multiple transcript variants encoding different isoforms have been found for this gene.