

# Recombinant Mouse CNDP2/CPGL/PEPA Protein (His Tag)



Catalog Number:PKSM041231

**Note:** Centrifuge before opening to ensure complete recovery of vial contents.

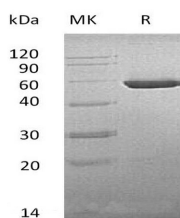
## Description

<b>Synonyms</b>	CNDP2;CNDP dipeptidase 2;Cytosolic non-specific dipeptidase;Glutamate carboxypeptidase-like protein 1;Dip-2;Pep-1;Pep1
<b>Species</b>	Mouse
<b>Expression Host</b>	HEK293 Cells
<b>Sequence</b>	Met1-Asn475
<b>Accession</b>	Q9D1A2
<b>Calculated Molecular Weight</b>	53.8 kDa
<b>Observed molecular weight</b>	56-60 kDa
<b>Tag</b>	C-His

## Properties

<b>Purity</b>	> 95 % as determined by reducing SDS-PAGE.
<b>Endotoxin</b>	< 1.0 EU per µg of the protein as determined by the LAL method.
<b>Storage</b>	Store at < -20°C, stable for 6 months. Please minimize freeze-thaw cycles.
<b>Shipping</b>	This product is provided as liquid. It is shipped at frozen temperature with blue ice/gel packs. Upon receipt, store it immediately at < - 20°C.
<b>Formulation</b>	Supplied as a 0.2 µm filtered solution of 20mM Tris-HCl, 150mM NaCl, 10% Glycerol, pH 8.0.
<b>Reconstitution</b>	Not Applicable

## Data



> 95 % as determined by reducing SDS-PAGE.

## Background

Mouse cytosolic non-specific dipeptidase(CNDP2) is a cytoplasm protein which belongs to the peptidase M20A family. CNDP2 has 2 Isoform: Isoform 1 is ubiquitously expressed with higher levels in kidney and liver (at protein level). Isoform 2 is expressed in fetal tissues, it is only expressed in adult liver and placental tissues. CNDP2 hydrolyzes a variety of dipeptides including L-carnosine and has a strong preference for Cys-Gly. It is a cytosolic enzyme that can hydrolyze carnosine to yield l-histidine and beta-alanine. CNDP2 is highly expressed in the histaminergic neurons in the tuberomammillary nucleus, implying that it may supply histidine to histaminergic neurons for histamine synthesis. It may play a role as tumor suppressor in hepatocellular carcinoma (HCC) cells.

## For Research Use Only

A Reliable Research Partner in Life Science and Medicine

Toll-free: 1-888-852-8623

Web: [www.elabscience.com](http://www.elabscience.com)

Tel: 1-832-243-6086

Email: [techsupport@elabscience.com](mailto:techsupport@elabscience.com)

Fax: 1-832-243-6017