

# TMED10 Polyclonal Antibody

catalog number: E-AB-53096

**Note:** Centrifuge before opening to ensure complete recovery of vial contents.

## Description

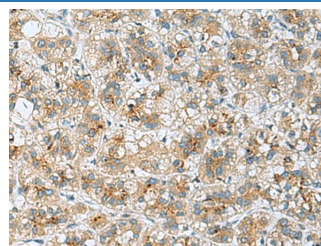
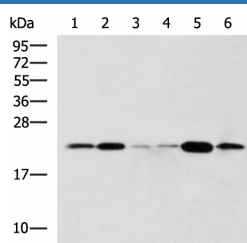
<b>Reactivity</b>	Human;Mouse;Rat
<b>Immunogen</b>	Fusion protein of human TMED10
<b>Host</b>	Rabbit
<b>Isotype</b>	IgG
<b>Purification</b>	Antigen affinity purification
<b>Conjugation</b>	Unconjugated
<b>buffer</b>	Phosphate buffered solution, pH 7.4, containing 0.05% stabilizer and 50% glycerol.

## Applications

## Recommended Dilution

<b>WB</b>	1:500-1:2000
<b>IHC</b>	1:50-1:200

## Data

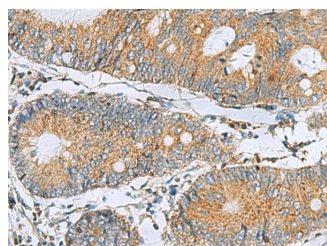


Western blot analysis of Raji Hela cell Mouse liver tissue Rat lung tissue Mouse Pancreas tissue NIH/3T3 cell lysates using TMED10 Polyclonal Antibody at dilution of 1:800

Immunohistochemistry of paraffin-embedded Human liver cancer tissue using TMED10 Polyclonal Antibody at dilution of 1:50(×200)

**Observed-MV:Refer to figures**

**Calculated-MV:25 kDa**



Immunohistochemistry of paraffin-embedded Human colorectal cancer tissue using TMED10 Polyclonal Antibody at dilution of 1:50(×200)

## Preparation & Storage

<b>Storage</b>	Store at -20°C Valid for 12 months. Avoid freeze / thaw cycles.
<b>Shipping</b>	The product is shipped with ice pack,upon receipt,store it immediately at the temperature recommended.

## Background

## For Research Use Only

# TMED10 Polyclonal Antibody

catalog number: E-AB-53096



This gene is a member of the EMP24/GP25L/p24 family and encodes a protein with a GOLD domain. This type I membrane protein is localized to the plasma membrane and golgi cisternae and is involved in vesicular protein trafficking. The protein is also a member of a heteromeric secretase complex and regulates the complex's gamma-secretase activity without affecting its epsilon-secretase activity. Mutations in this gene have been associated with early-onset familial Alzheimer's disease. This gene has a pseudogene on chromosome 8.

## For Research Use Only

A Reliable Research Partner in Life Science and Medicine  
Tel: 400-999-2100

Email: [techsupport@elabscience.cn](mailto:techsupport@elabscience.cn)

Web: [www.elabscience.cn](http://www.elabscience.cn)

Rev. V1.7