

Recombinant Human ITPase/ITPA Protein (His Tag)

Catalog Number:PKSH032588



Note: Centrifuge before opening to ensure complete recovery of vial contents.

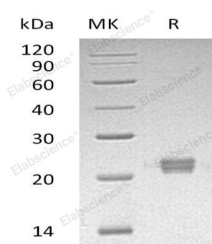
Description

Synonyms	Inosine Triphosphate Pyrophosphatase;ITPase;Inosine Triphosphatase;Non-Canonical Purine NTP Pyrophosphatase;Non-Standard Purine NTP Pyrophosphatase;Nucleoside-Triphosphate Diphosphatase;Nucleoside-Triphosphate Pyrophosphatase;NTPase;Putative Oncogene Protein hlc14-06-p;ITPA;C20orf37
Species	Human
Expression Host	E.coli
Sequence	Ala2-Ala194
Accession	Q9BY32
Calculated Molecular Weight	22.5 kDa
Observed molecular weight	21 kDa
Tag	C-His

Properties

Purity	> 95 % as determined by reducing SDS-PAGE.
Endotoxin	< 1.0 EU per µg of the protein as determined by the LAL method.
Storage	Store at < -20°C, stable for 6 months. Please minimize freeze-thaw cycles.
Shipping	This product is provided as liquid. It is shipped at frozen temperature with blue ice/gel packs. Upon receipt, store it immediately at < - 20°C.
Formulation	Supplied as a 0.2 µm filtered solution of 20mM Tris-HCl, 5% Trehalose, 300mM NaCl, 30% Glycerol, 0.05% Tween 80, pH8.0.
Reconstitution	Not Applicable

Data



> 95 % as determined by reducing SDS-PAGE.

Background

Inosine Triphosphate Pyrophosphatase (ITPase) is a cytoplasmic enzyme that belongs to the HAM1 NTPase family. ITPase hydrolyzes the non-canonical purine nucleotides inosine triphosphate (ITP) and deoxyinosine triphosphate (dITP) to the monophosphate nucleotide (IMP) and diphosphate. The ITPase enzyme acts as a homodimer and does not distinguish between the deoxy- and ribose forms. ITPase probably excludes non-canonical purines from RNA and DNA precursor pools, thus preventing their incorporation into RNA and DNA and avoiding chromosomal lesions. Defects in ITPase is thought to be inherited and is characterized by an over-accumulation of ITP in erythrocytes, leukocytes and fibroblasts.

For Research Use Only

A Reliable Research Partner in Life Science and Medicine

Toll-free: 1-888-852-8623

Web: www.elabscience.com

Tel: 1-832-243-6086

Email: techsupport@elabscience.com

Fax: 1-832-243-6017