

# KDM3B Polyclonal Antibody

Catalog Number: E-AB-11339



**Note:** Centrifuge before opening to ensure complete recovery of vial contents.

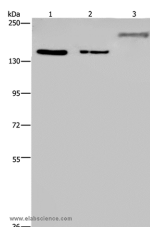
## Description

<b>Reactivity</b>	Human, Mouse
<b>Immunogen</b>	Recombinant protein of human KDM3B
<b>Host</b>	Rabbit
<b>Isotype</b>	IgG
<b>Purification</b>	Affinity purification
<b>Conjugation</b>	Unconjugated
<b>Formulation</b>	PBS with 0.05% sodium azide and 50% glycerol, PH7.4

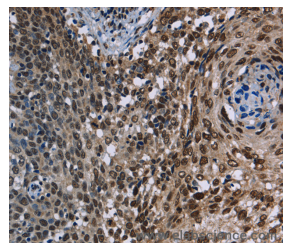
## Applications Recommended Dilution

<b>WB</b>	1:1000-1:5000
<b>IHC</b>	1:50-1:200

## Data



Western Blot analysis of HeLa and 293T cell, Mouse skeletal muscle tissue using KDM3B Polyclonal Antibody at dilution of 1:1000  
**Calculated Mw:192kDa**



Immunohistochemistry of paraffin-embedded Human cervical cancer using KDM3B Polyclonal Antibody at dilution of 1:40

## Preparation & Storage

**Storage** Store at -20°C. Avoid freeze / thaw cycles.

## Background

JMJD1B (jumonji domain containing 1B), also known as KDM3B, 5qNCA (5q Nuclear Co-Activator) or C5orf7, is a member of the JHDM2 histone demethylase family of proteins. Expressed in a wide variety of tissues, JMJD1B localizes to the nucleus and contains one JMJC domain and a C-terminal zinc finger motif. JMJD1B functions as a histone demethylase and, using iron as a cofactor, demethylates lysine-9 of Histone H3. This suggests that JMJD1B plays a central role in the histone code. The gene encoding human JMJD1B is located within the 5q region of the genome that is often deleted in myeloid leukemias and myelodysplasias. This implies that JMJD1B may function as a tumor suppressor of myeloid leukemia. Ectopic expression of JMJD1B exhibits growth suppressive activities, further supporting a role for JMJD1B in tumor suppression.

## For Research Use Only

A Reliable Research Partner in Life Science and Medicine

Toll-free: 1-888-852-8623

Web: [www.elabscience.com](http://www.elabscience.com)

Tel: 1-832-243-6086

Email: [techsupport@elabscience.com](mailto:techsupport@elabscience.com)

Fax: 1-832-243-6017