

MPP6 Polyclonal Antibody

Catalog Number: E-AB-17540



Note: Centrifuge before opening to ensure complete recovery of vial contents.

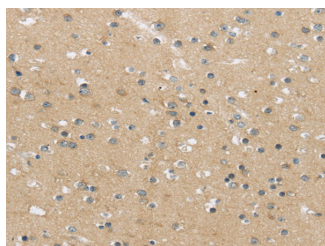
Description

| | |
|---------------------|---|
| Reactivity | Human, Mouse |
| Immunogen | Synthetic peptide of human MPP6 |
| Host | Rabbit |
| Isotype | IgG |
| Purification | Affinity purification |
| Conjugation | Unconjugated |
| Formulation | PBS with 0.05% sodium azide and 50% glycerol, PH7.4 |

Applications Recommended Dilution

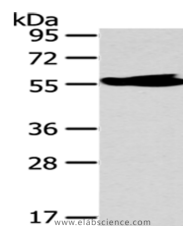
| | |
|--------------|-------------|
| WB | 1:500-2000 |
| IHC | 1:25-100 |
| ELISA | 1:2000-5000 |

Data



Immunohistochemistry of paraffin-embedded Human brain using MPP6 Polyclonal Antibody at dilution of 1/25

Calculated Mw: 61 kDa



Western Blot analysis of Human fetal brain tissue using MPP6 Polyclonal Antibody at dilution of 1/250

Preparation & Storage

Storage Store at -20°C. Avoid freeze / thaw cycles.

Background

Members of the peripheral membrane-associated guanylate kinase (MAGUK) family function in tumor suppression and receptor clustering by forming multiprotein complexes containing distinct sets of transmembrane, cytoskeletal, and cytoplasmic signaling proteins. All MAGUKs contain a PDZ-SH3-GUK core and are divided into 4 subfamilies, DLG-like (see DLG1; MIM 601014), ZO1-like (see TJP1; MIM 601009), p55-like (see MPP1; MIM 305360), and LIN2-like (see CASK; MIM 300172), based on their size and the presence of additional domains. MPP6 is a member of the p55-like MAGUK subfamily (Tseng et al., 2001 [PubMed 11311936]).

For Research Use Only

A Reliable Research Partner in Life Science and Medicine

Toll-free: 1-888-852-8623

Web: www.elabscience.com

Tel: 1-832-243-6086

Email: techsupport@elabscience.com

Fax: 1-832-243-6017