

PGP 9.5 Polyclonal Antibody

Catalog Number: E-AB-70268



Note: Centrifuge before opening to ensure complete recovery of vial contents.

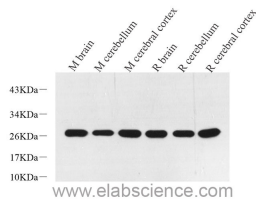
Description

Reactivity	Mouse, Rat
Immunogen	KLH conjugated Synthetic peptide corresponding to Mouse PGP9.5
Host	Rabbit
Isotype	IgG
Purification	Affinity purification
Conjugation	Unconjugated
Formulation	PBS with 0.02% sodium azide, 1% protective protein and 50% glycerol, pH7.4

Applications Recommended Dilution

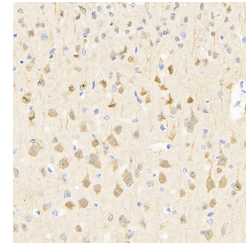
WB	1:500-1:2000
IHC	1:300-1:800

Data

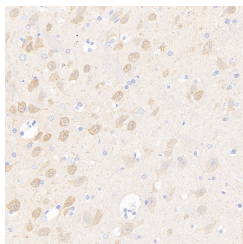


Western Blot analysis of various samples using PGP 9.5 Polyclonal Antibody at dilution of 1:600.

Observed Mw:27kDa
Calculated Mw:27kDa



Immunohistochemistry analysis of paraffin-embedded mouse brain using PGP 9.5 Polyclonal Antibody at dilution of 1:500.



Immunohistochemistry analysis of paraffin-embedded rat brain using PGP 9.5 Polyclonal Antibody at dilution of 1:500.

Preparation & Storage

Storage Store at -20°C. Avoid freeze / thaw cycles.

Background

UCHL1 (Ubiquitin carboxyl-terminal hydrolase isozyme L1) is a member of a gene family whose products hydrolyze small C-terminal adducts of ubiquitin to generate the ubiquitin monomer. Expression of UCHL1 is highly specific to neurons and to cells of the diffuse neuroendocrine system and their tumors. It is present in all neurons. This protein is

For Research Use Only

A Reliable Research Partner in Life Science and Medicine

Toll-free: 1-888-852-8623

Web: www.elabscience.com

Tel: 1-832-243-6086

Email: techsupport@elabscience.com

Fax: 1-832-243-6017

PGP 9.5 Polyclonal Antibody

Catalog Number: E-AB-70268



present in brain at concentrations at least 50 times greater than in other organs and is a major protein component of neuronal cytoplasm . And UCHL1 is a Parkinson's disease susceptibility gene .

For Research Use Only

A Reliable Research Partner in Life Science and Medicine

Toll-free: 1-888-852-8623

Tel: 1-832-243-6086

Fax: 1-832-243-6017

Web: www.elabscience.com

Email: techsupport@elabscience.com