

PE/Cyanine5.5 Anti-Mouse CD3 Antibody[17A2]

Catalog Number: E-AB-F1013UI

Note: Centrifuge before opening to ensure complete recovery of vial contents.

Description

Reactivity	Mouse
Host	Rat
Isotype	Rat IgG2b, κ
Clone No.	17A2
Isotype Control	PE/Cyanine5.5 Rat IgG2b, κ Isotype Control[LTF-2] [Product E-AB-F09843I]
Conjugation	PE/Cyanine 5.5
Conjugation Information	PE/Cyanine5.5 is designed to be excited by the Blue (488 nm), Green (532 nm) and yellow-green (561 nm) lasers and detected using an optical filter centered near 690 nm (e.g., a 690/50 nm bandpass filter).
Storage Buffer	Phosphate buffered solution, pH 7.2, containing 0.09% sodium azide and 1% BSA.

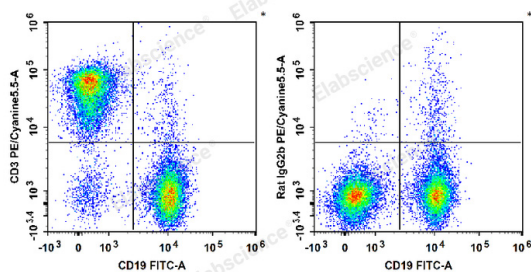
Applications

FCM

Recommended usage

Each lot of this antibody is quality control tested by flow cytometric analysis. Please check your vial before the experiment. Since applications vary, the appropriate dilutions must be determined for individual use. We suggest each investigator should titrate the reagent to obtain optimal results [The recommended concentration is 0.1-1 $\mu\text{g}/10^6$ cells in 100 μL volume].

Data



C57BL/6 murine splenocytes are stained with FITC Anti-Mouse CD19 Antibody and PE/Cyanine5.5 Anti-Mouse CD3 Antibody (Left). Splenocytes are stained with FITC Anti-Mouse CD19 Antibody and PE/Cyanine5.5 Rat IgG2b, κ Isotype Control (Right).

Preparation & Storage

Storage	Keep as concentrated solution. This product can be stored at 2-8°C for 12 months. Please protected from prolonged exposure to light and do not freeze.
Shipping	Ice bag

Antigen Information

Alternate Names	CD3;CD3E/D/G/Z;CD3e/d/g/z;T-cell surface glycoprotein CD 3epsilon/delta/gamma/zeta chain
------------------------	--

For Research Use Only

Uniprot ID

P04235;P11942;P22646;P24161

Gene ID

12502

Background

CD3, also known as T3, is a member of the Ig superfamily and primarily expressed on T cells, NK-T cells, and at different levels on thymocytes during T cell differentiation. CD3 is composed of CD3 ϵ , δ , γ and ζ chains. It forms a TCR complex by associating with TCR α/β or γ/δ chains. CD3 plays a critical role in TCR signal transduction, T cell activation, and antigen recognition by binding the peptide/MHC antigen complex.