

HRAS Polyclonal Antibody

catalog number: E-AB-40406

Note: Centrifuge before opening to ensure complete recovery of vial contents.

Description

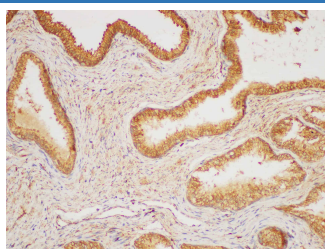
Reactivity	Human;Mouse;Rat
Immunogen	Recombinant Human GTPase HRas protein
Host	Rabbit
Isotype	IgG
Purification	Antigen Affinity Purification
Buffer	PBS with 0.05% Proclin300, 1% protective protein and 50% glycerol, pH7.4

Applications

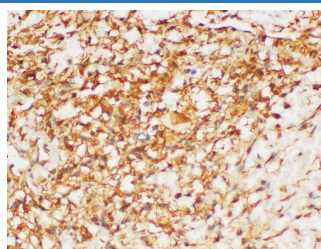
Recommended Dilution

IHC	1:100-1:300
------------	-------------

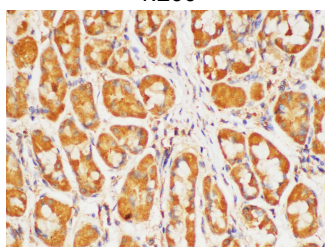
Data



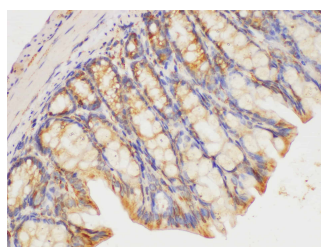
Immunohistochemistry of paraffin-embedded Human prostate gland using HRAS Polyclonal Antibody at dilution of 1:200



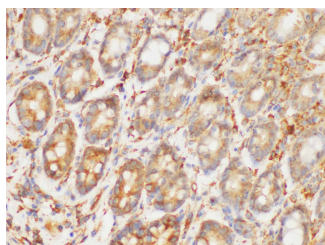
Immunohistochemistry of paraffin-embedded Human kidney cancer using HRAS Polyclonal Antibody at dilution of 1:200



Immunohistochemistry of paraffin-embedded Human stomach using HRAS Polyclonal Antibody at dilution of 1:200



Immunohistochemistry of paraffin-embedded Mouse colon using HRAS Polyclonal Antibody at dilution of 1:200



Immunohistochemistry of paraffin-embedded Rat colon using HRAS Polyclonal Antibody at dilution of 1:200

Preparation & Storage

Storage	Store at -20°C Valid for 12 months. Avoid freeze / thaw cycles.
Shipping	The product is shipped with ice pack, upon receipt, store it immediately at the temperature recommended.

For Research Use Only

Toll-free: 1-888-852-8623
Web: www.elabscience.com

Tel: 1-832-243-6086
Email: techsupport@elabscience.com

Fax: 1-832-243-6017

Rev. V2.0

Background

This gene belongs to the Ras oncogene family, whose members are related to the transforming genes of mammalian sarcoma retroviruses. The products encoded by these genes function in signal transduction pathways. These proteins can bind GTP and GDP, and they have intrinsic GTPase activity. This protein undergoes a continuous cycle of de- and re-palmitoylation, which regulates its rapid exchange between the plasma membrane and the Golgi apparatus. Mutations in this gene cause Costello syndrome, a disease characterized by increased growth at the prenatal stage, growth deficiency at the postnatal stage, predisposition to tumor formation, mental retardation, skin and musculoskeletal abnormalities, distinctive facial appearance and cardiovascular abnormalities. Defects in this gene are implicated in a variety of cancers, including bladder cancer, follicular thyroid cancer, and oral squamous cell carcinoma. Multiple transcript variants, which encode different isoforms, have been identified for this gene.

For Research Use Only