

Recombinant Human MAP2 protein(His tag)

Catalog Number:PDEH100106



Note: Centrifuge before opening to ensure complete recovery of vial contents.

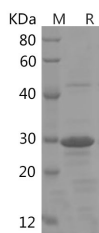
Description

Synonyms	MAP-2
Species	Human
Expression Host	E.coli
Sequence	Asp300-Pro500
Accession	P11137
Calculated Molecular Weight	22.4 kDa
Observed molecular weight	30 kDa
Tag	N-His

Properties

Purity	> 80 % as determined by reducing SDS-PAGE.
Endotoxin	Please contact us for more information.
Storage	Generally, lyophilized proteins are stable for up to 12 months when stored at -20 to -80°C. Reconstituted protein solution can be stored at 4-8°C for 2-7 days. Aliquots of reconstituted samples are stable at < -20°C for 3 months.
Shipping	This product is provided as lyophilized powder which is shipped with ice packs.
Formulation	Lyophilized from sterile PBS, pH 7.4. Normally 5 % - 8 % trehalose, mannitol and 0.01 % Tween80 are added as protectants before lyophilization. Please refer to the specific buffer information in the printed manual.
Reconstitution	Please refer to the printed manual for detailed information.

Data



> 80 % as determined by reducing SDS-PAGE.

Background

The exact function of MAP2 is unknown but MAPs may stabilize the microtubules against depolymerization. They also seem to have a stiffening effect on microtubules.

For Research Use Only

A Reliable Research Partner in Life Science and Medicine

Toll-free: 1-888-852-8623

Web: www.elabscience.com

Tel: 1-832-243-6086

Email: techsupport@elabscience.com

Fax: 1-832-243-6017