

HKDC1 Polyclonal Antibody

Catalog Number: E-AB-66860



Note: Centrifuge before opening to ensure complete recovery of vial contents.

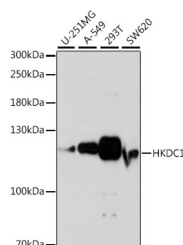
Description

Reactivity	Human
Immunogen	A synthetic peptide of human HKDC1 (NP_079406.3).
Host	Rabbit
Isotype	IgG
Purification	Affinity purification
Conjugation	Unconjugated
Formulation	PBS with 0.02% sodium azide, 50% glycerol, pH7.3.

Applications Recommended Dilution

WB	1:500-1:2000
-----------	--------------

Data



Western blot analysis of extracts of various cell lines using HKDC1 Polyclonal Antibody at dilution of 1:1000.

Observed MW:120kDa

Calculated Mw:82kDa/90kDa/102kDa

Preparation & Storage

Storage Store at -20°C. Avoid freeze / thaw cycles.

Background

This gene encodes a member of the hexokinase protein family. The encoded protein is involved in glucose metabolism, and reduced expression may be associated with gestational diabetes mellitus. High expression of this gene may also be associated with poor prognosis in hepatocarcinoma.

For Research Use Only

A Reliable Research Partner in Life Science and Medicine

Toll-free: 1-888-852-8623

Web: www.elabscience.com

Tel: 1-832-243-6086

Email: techsupport@elabscience.com

Fax: 1-832-243-6017