

## CD44 Monoclonal Antibody

**catalog number:** AN200020P

**Note:** Centrifuge before opening to ensure complete recovery of vial contents.

### Description

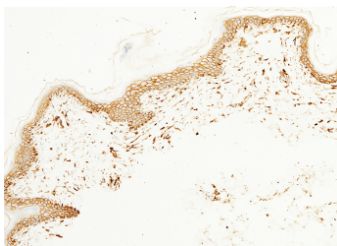
<b>Reactivity</b>	Human
<b>Immunogen</b>	Recombinant Human CD44 protein
<b>Host</b>	Mouse
<b>Isotype</b>	IgG1
<b>Clone</b>	9F2
<b>Purification</b>	Protein A
<b>Buffer</b>	0.2 µm filtered solution in PBS with 10% Trehalose, pH7.0

### Applications

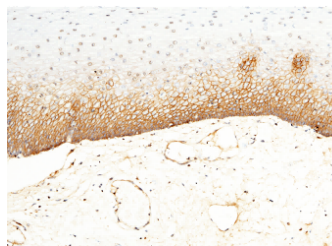
### Recommended Dilution

<b>IHC-P</b>	1:100-1:500
--------------	-------------

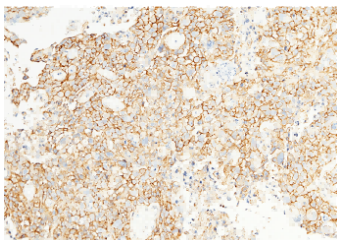
### Data



Immunohistochemistry of paraffin-embedded human skin using CD44 Monoclonal Antibody at dilution of 1:300.



Immunohistochemistry of paraffin-embedded human esophagus using CD44 Monoclonal Antibody at dilution of 1:300.



Immunohistochemistry of paraffin-embedded human bladder carcinoma using CD44 Monoclonal Antibody at dilution of 1:300.

### Preparation & Storage

<b>Storage</b>	This antibody can be stored at 2°C-8°C for one month without detectable loss of activity. Antibody products are stable for twelve months from date of receipt when stored at -20°C to -80°C. Preservative-Free. Avoid repeated freeze-thaw cycles.
<b>Shipping</b>	Ice bag

### Background

### For Research Use Only

CD44 is a 80-95 kD glycoprotein also known as Hermes, Pgp1, H-CAM, or HUTCH. It is expressed on all leukocytes, endothelial cells, hepatocytes, and mesenchymal cells. As B and T cells become activated or progress to the memory stage, CD44 expression increases from a low or mid level of intensity to high expression levels. Thus, CD44 has been reported to be a valuable marker for memory cell subsets. CD44 is an adhesion molecule involved in leukocyte attachment to and rolling on endothelial cells, homing to peripheral lymphoid organs and to the sites of inflammation, and leukocyte aggregation.