

Recombinant Human Vinculin/VCL protein (His tag)

Catalog Number:PDEH100323



Note: Centrifuge before opening to ensure complete recovery of vial contents.

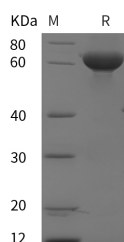
Description

Synonyms	Vinculin;Metavinculin;VCL;CMD1W;CMH15;HEL114;MV;MVCL
Species	Human
Expression Host	E.coli
Sequence	Met 1-Val650
Accession	P18206
Calculated Molecular Weight	71.4 kDa
Observed molecular weight	60 kDa
Tag	N-His & C-His

Properties

Purity	> 95 % as determined by reducing SDS-PAGE.
Endotoxin	Please contact us for more information.
Storage	Generally, lyophilized proteins are stable for up to 12 months when stored at -20 to -80°C. Reconstituted protein solution can be stored at 4-8°C for 2-7 days. Aliquots of reconstituted samples are stable at < -20°C for 3 months.
Shipping	This product is provided as lyophilized powder which is shipped with ice packs.
Formulation	Lyophilized from sterile PBS, pH 7.4. Normally 5 % - 8 % trehalose, mannitol and 0.01% Tween80 are added as protectants before lyophilization. Please refer to the specific buffer information in the printed manual.
Reconstitution	Please refer to the printed manual for detailed information.

Data



> 95 % as determined by reducing SDS-PAGE.

Background

Vinculin is a focal adhesion and cytoskeletal protein that distributed mainly at cell-cell junctions and cell-extracellular matrix (ECM) adhesion that belongs to the Vinculin/ α -Catenin family. Vinculin is an Actin-binding protein and component of the Actin-Linking Functional module that senses and feels the mechanical properties of the extracellular environment. Vinculin is also a key factor that couples, transmits, transduces, and regulates mechanical force between the cytoskeleton and adhesion receptors. Vinculin generally forms two structural states, an open (active) and closed (inactive) state, which are controlled by conformational interaction(s) between the head and tail domains. Vinculin is involved in the mechano-chemical signal transmission of cells by binding to a variety of focal adhesion or cytoskeletal proteins, and plays important roles in cell adhesion, extension, motion, proliferation and survival.

For Research Use Only

A Reliable Research Partner in Life Science and Medicine

Toll-free: 1-888-852-8623

Web: www.elabscience.com

Tel: 1-832-243-6086

Email: techsupport@elabscience.com

Fax: 1-832-243-6017