

Recombinant Human CDC42BPB Protein (His & GST Tag)



Catalog Number: PKSH031097

Note: Centrifuge before opening to ensure complete recovery of vial contents.

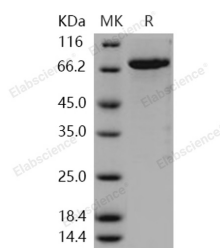
Description

Synonyms	MRCKB
Species	Human
Expression Host	Baculovirus-Insect Cells
Sequence	Met 1-His 427
Accession	Q9Y5S2
Calculated Molecular Weight	82.4 kDa
Observed molecular weight	70 kDa
Tag	N-His-GST

Properties

Purity	> 94 % as determined by reducing SDS-PAGE.
Endotoxin	< 1.0 EU per µg of the protein as determined by the LAL method.
Storage	Generally, lyophilized proteins are stable for up to 12 months when stored at -20 to -80°C. Reconstituted protein solution can be stored at 4-8°C for 2-7 days. Aliquots of reconstituted samples are stable at < -20°C for 3 months.
Shipping	This product is provided as lyophilized powder which is shipped with ice packs.
Formulation	Lyophilized from sterile 50mM PBS, 500mM NaCl, 10% glycerol, 2mM GSH, pH 7.4 Normally 5 % - 8 % trehalose, mannitol and 0.01 % Tween80 are added as protectants before lyophilization. Please refer to the specific buffer information in the printed ma
Reconstitution	Please refer to the printed manual for detailed information.

Data



> 94 % as determined by reducing SDS-PAGE.

Background

CDC42BPB is a member of the serine / threonine protein kinase family that contains a Cdc42 / Rsc-binding p21 binding domain similar to that of PAK kinase. The kinase domain of this protein is related to the myotonic dystrophy kinase related ROK and this kinase may have functions in downstream regulating of Cdc42 in cytoskeletal recognition. It has been reported that the CDC42BPB protein take part in regulating numerous cellular functions by binding to members of a serine / threonine protein kinase subfamily. These functions include the remodeling of the cell cytoskeleton that is a feature of cell growth and differentiation.

For Research Use Only

A Reliable Research Partner in Life Science and Medicine

Toll-free: 1-888-852-8623

Web: www.elabscience.com

Tel: 1-832-243-6086

Email: techsupport@elabscience.com

Fax: 1-832-243-6017