

## Recombinant UCHL1/PGP9.5 Monoclonal Antibody

catalog number: **AN300102P**

**Note:** Centrifuge before opening to ensure complete recovery of vial contents.

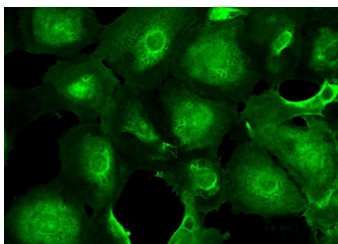
### Description

<b>Reactivity</b>	Human
<b>Immunogen</b>	Recombinant Human UCHL1 protein
<b>Host</b>	Rabbit
<b>Isotype</b>	IgG
<b>Clone</b>	A1216
<b>Purification</b>	Protein A
<b>Buffer</b>	0.2 µm filtered solution in PBS

### Applications Recommended Dilution

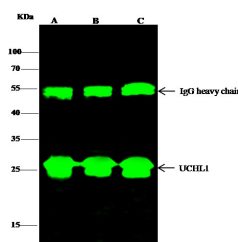
<b>WB</b>	1:500-1:2000
<b>ICC/IF</b>	1:20-1:100
<b>IP</b>	0.5-2 µL/mg of lysate

### Data



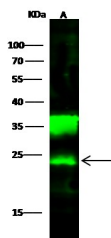
Immunofluorescence analysis of UCHL1 in DU145 cells.

Cells were fixed with 4% PFA, permeabilized with 0.1% Triton X-100 in PBS, blocked with 10% serum, and incubated with rabbit anti-human UCHL1 Monoclonal Antibody (dilution ratio 1:60) at 4°C overnight. Then cells were stained with the Alexa Fluor®488-conjugated Goat Anti-rabbit IgG secondary antibody (green). Positive staining was localized to Cytoplasm.



Immunoprecipitation analysis using 2 µL anti-UCHL1 Monoclonal Antibody and 15 µl of 50 % Protein G agarose. Western blot was performed from the immunoprecipitate using UCHL1 Monoclonal Antibody at a dilution of 1:500. Lane A: 0.5 mg 293T Whole Cell Lysate, Lane B: 0.5 mg SH-SY5Y Whole Cell Lysate, Lane C: 0.5 mg U87MG Whole Cell Lysate

**Observed-MW: 24 kDa**  
**Calculated-MW: 25 kDa**



Western Blot with UCHL1 / PGP9.5 Monoclonal Antibody at dilution of 1:500. Lane A: SH-SY5Y Whole Cell Lysate, Lysates/proteins at 30 µg per lane.

**Observed-MW: 24 kDa**  
**Calculated-MW: 25 kDa**

### Preparation & Storage

### For Research Use Only

**Storage**

This antibody can be stored at 2°C-8°C for one month without detectable loss of activity. Antibody products are stable for twelve months from date of receipt when stored at -20°C to -80°C. Preservative-Free. Avoid repeated freeze-thaw cycles.

**Shipping**

Ice bag

**Background**

Ubiquitin-protein hydrolase involved both in the processing of ubiquitin precursors and of ubiquitinated proteins (Probable). This enzyme is a thiol protease that recognizes and hydrolyzes a peptide bond at the C-terminal glycine of ubiquitin. Also binds to free monoubiquitin and may prevent its degradation in lysosomes. The homodimer may have ATP-independent ubiquitin ligase activity.

**For Research Use Only**

Toll-free: 1-888-852-8623  
Web: [www.elabscience.com](http://www.elabscience.com)

Tel: 1-832-243-6086  
Email: [techsupport@elabscience.com](mailto:techsupport@elabscience.com)

Fax: 1-832-243-6017

Rev. V1.2