

Recombinant Human IL-1R8/IL1RAPL1 Protein (Fc Tag)



Catalog Number: PKSH031796

Note: Centrifuge before opening to ensure complete recovery of vial contents.

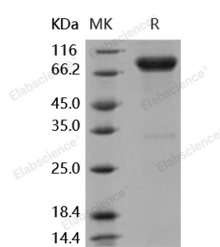
Description

Synonyms	IL1R8;IL1RAPL;MRX10;MRX21;MRX34;OPHN4;TIGIRR-2
Species	Human
Expression Host	HEK293 Cells
Sequence	Met 1-Leu 354
Accession	NP_055086.1
Calculated Molecular Weight	65.0 kDa
Observed molecular weight	80-85 kDa
Tag	C-hFc
Bioactivity	Measured by its ability to bind biotinylated human IL1 α in functional ELISA.

Properties

Purity	> 95 % as determined by reducing SDS-PAGE.
Endotoxin	< 1.0 EU per μ g of the protein as determined by the LAL method.
Storage	Generally, lyophilized proteins are stable for up to 12 months when stored at -20 to -80°C. Reconstituted protein solution can be stored at 4-8°C for 2-7 days. Aliquots of reconstituted samples are stable at < -20°C for 3 months.
Shipping	This product is provided as lyophilized powder which is shipped with ice packs.
Formulation	Lyophilized from sterile PBS, pH 7.4 Normally 5 % - 8 % trehalose, mannitol and 0.01 % Tween80 are added as protectants before lyophilization. Please refer to the specific buffer information in the printed manual.
Reconstitution	Please refer to the printed manual for detailed information.

Data



> 95 % as determined by reducing SDS-PAGE.

Background

Interleukin-1 receptor accessory protein-like 1 (IL1RAPL1) is a member of interleukin-1 receptor family. The protein structurally comprises three extracellular immunoglobulin domains; which presumably mediate binding of an as yet unidentified ligand; a transmembrane region; and an intracellular domain; which is likely to enable signalling via the NF κ B pathway. The means of signalling is almost certain to be identical to that used by the IL1R family and the more distally related Toll protein. L1RAPL1 protein physically interacts via its 150 aa C-terminal domain with neuronal calcium sensor-1 (NCS-1); a protein widely expressed in neurons and the related chromaffin and PC12 cells. IL1RAPL1 is an integral membrane protein responsible for a nonsyndromic form of mental retardation (MR). It is suggested to affect

For Research Use Only

A Reliable Research Partner in Life Science and Medicine

Toll-free: 1-888-852-8623

Web: www.elabscience.com

Tel: 1-832-243-6086

Email: techsupport@elabscience.com

Fax: 1-832-243-6017

Recombinant Human IL-1R8/IL1RAPL1 Protein (Fc Tag)

Catalog Number: PKSH031796



human cognitive ability to some extent; especially the memory and concentration capability.

For Research Use Only

A Reliable Research Partner in Life Science and Medicine

Toll-free: 1-888-852-8623

Tel: 1-832-243-6086

Fax: 1-832-243-6017

Web: www.elabscience.com

Email: techsupport@elabscience.com