

RPS6KC1 Polyclonal Antibody

Catalog Number:E-AB-90681



Note: Centrifuge before opening to ensure complete recovery of vial contents.

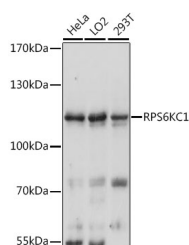
Description

Reactivity	Human
Immunogen	Recombinant fusion protein of human RPS6KC1
Host	Rabbit
Isotype	IgG
Purification	Affinity purification
Conjugation	Unconjugated
Formulation	PBS with 0.01% thiomersal, 50% glycerol, pH7.3.

Applications Recommended Dilution

WB	1:500-1:2000
-----------	--------------

Data



Western blot analysis of extracts of various cell lines using RPS6KC1 Polyclonal Antibody at 1:3000 dilution.

Observed Mw:120kDa

Calculated Mw:117kDa/118kDa

Preparation & Storage

Storage Store at -20°C. Avoid freeze/thaw cycles.

Background

Sphingosine kinase catalyzes the formation of sphingosine 1 phosphate, a lipid cellular messenger. The protein encoded by this gene can bind to sphingosine kinase and to phosphatidylinositol 3-phosphate, suggesting a role in sphingosine 1 phosphate signaling. The encoded protein can also bind to peroxiredoxin-3 and may help transport it to mitochondria. [provided by RefSeq, Mar 2017]

For Research Use Only

A Reliable Research Partner in Life Science and Medicine

Toll-free: 1-888-852-8623

Web: www.elabscience.com

Tel: 1-832-243-6086

Email: techsupport@elabscience.com

Fax: 1-832-243-6017