

# mCherry-Tag Monoclonal Antibody

catalog number: E-AB-48007

**Note:** Centrifuge before opening to ensure complete recovery of vial contents.

## Description

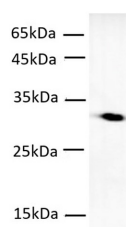
<b>Reactivity</b>	All
<b>Immunogen</b>	Recombinant Discosoma sp. mCherry Protein
<b>Host</b>	Mouse
<b>Isotype</b>	IgG1
<b>Clone</b>	4E3
<b>Purification</b>	Protein A/G Purification
<b>Conjugation</b>	Unconjugated
<b>buffer</b>	PBS with 0.05% proclin 300, 1% protective protein and 50% glycerol,pH7.4

## Applications

## Recommended Dilution

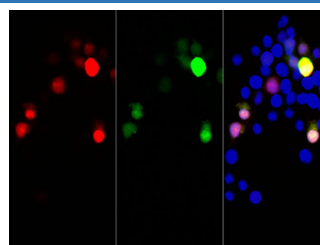
<b>WB</b>	1:1000-2000
<b>IF</b>	1:6000-12000

## Data



Western blot of mCherry protein with anti-mCherry antibody at dilution of 1:2000.

**Observed-MV:30 kDa**  
**Calculated-MV:30 kDa**



Immunofluorescent analysis of 293F cells transfected with the mCherry, using anti-mCherry monoclonal antibody at dilution of 1:12000.

## Preparation & Storage

<b>Storage</b>	Store at -20°C Valid for 12 months. Avoid freeze / thaw cycles.
<b>Shipping</b>	The product is shipped with ice pack,upon receipt,store it immediately at the temperature recommended.

## Background

mCherry is a member of the mFruits family of monomeric red fluorescent proteins (mRFPs). As a RFP, mCherry was derived from DsRed of Discosoma sea anemones unlike green fluorescent proteins (GFPs) which are often derived from Aequorea victoria jellyfish. mCherry belongs to the group of fluorescent protein chromophores used as instruments to visualize genes and analyze their functions in experiments.

## For Research Use Only