

JDP2 Polyclonal Antibody

catalog number: E-AB-18141

Note: Centrifuge before opening to ensure complete recovery of vial contents.

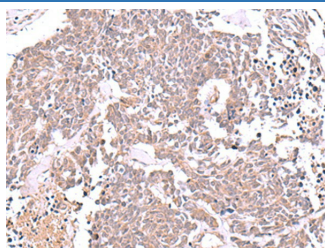
Description

Reactivity	Human;Mouse;Rat
Immunogen	Synthetic peptide of human JDP2
Host	Rabbit
Isotype	IgG
Purification	Antigen affinity purification
Conjugation	Unconjugated
buffer	Phosphate buffered solution, pH 7.4, containing 0.05% stabilizer and 50% glycerol.

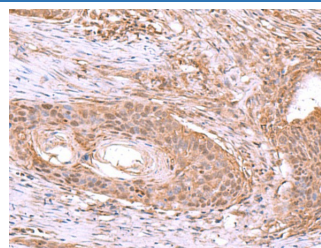
Applications

Applications	Recommended Dilution
IHC	1:40-1:200

Data



Immunohistochemistry of paraffin-embedded Human lung cancer tissue using JDP2 Polyclonal Antibody at dilution of 1:40(×200)



Immunohistochemistry of paraffin-embedded Human esophagus cancer tissue using JDP2 Polyclonal Antibody at dilution of 1:40(×200)

Preparation & Storage

Storage	Store at -20°C Valid for 12 months. Avoid freeze / thaw cycles.
Shipping	The product is shipped with ice pack, upon receipt, store it immediately at the temperature recommended.

Background

JDP2 (Jun Dimerization Protein 2) is a Protein Coding gene. Diseases associated with JDP2 include Keratitis and Skeletal Muscle Cancer. Among its related pathways are Tacrolimus/Cyclosporine Pathway, Pharmacodynamics and ATF-2 transcription factor network. GO annotations related to this gene include transcription factor activity, sequence-specific DNA binding and protein heterodimerization activity. An important paralog of this gene is ATF3.

For Research Use Only