

CHP1 Polyclonal Antibody

catalog number: E-AB-18023

Note: Centrifuge before opening to ensure complete recovery of vial contents.

Description

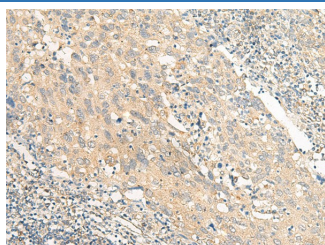
Reactivity	Human;Mouse;Rat
Immunogen	Synthetic peptide of human CHP1
Host	Rabbit
Isotype	IgG
Purification	Antigen affinity purification
Conjugation	Unconjugated
buffer	Phosphate buffered solution, pH 7.4, containing 0.05% stabilizer and 50% glycerol.

Applications

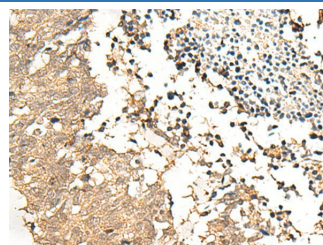
Recommended Dilution

IHC	1:30-1:150
------------	------------

Data



Immunohistochemistry of paraffin-embedded Human cervical cancer tissue using CHP1 Polyclonal Antibody at dilution of 1:25($\times 200$)



Immunohistochemistry of paraffin-embedded Human lung cancer tissue using CHP1 Polyclonal Antibody at dilution of 1:25($\times 200$)

Preparation & Storage

Storage	Store at -20°C Valid for 12 months. Avoid freeze / thaw cycles.
Shipping	The product is shipped with ice pack, upon receipt, store it immediately at the temperature recommended.

Background

This gene encodes a phosphoprotein that binds to the Na^+/H^+ exchanger NHE1. This protein serves as an essential cofactor which supports the physiological activity of NHE family members and may play a role in the mitogenic regulation of NHE1. The protein shares similarity with calcineurin B and calmodulin and it is also known to be an endogenous inhibitor of calcineurin activity. CHP1 (Calcineurin Like EF-Hand Protein 1) is a Protein Coding gene. Among its related pathways are Role of Calcineurin-dependent NFAT signaling in lymphocytes and Calcineurin-regulated NFAT-dependent transcription in lymphocytes. GO annotations related to this gene include calcium ion binding and microtubule binding. An important paralog of this gene is CHP2.

For Research Use Only