

## PE/Cyanine5.5 Anti-Human CD38 Antibody[HIT2]

Catalog Number: E-AB-F1058I

**Note:** Centrifuge before opening to ensure complete recovery of vial contents.

### Description

<b>Reactivity</b>	Human
<b>Host</b>	Mouse
<b>Isotype</b>	Mouse IgG1, κ
<b>Clone No.</b>	HIT2
<b>Isotype Control</b>	PE/Cyanine5.5 Mouse IgG1, κ Isotype Control[MOPC-21] [Product E-AB-F09792I]
<b>Conjugation</b>	PE/Cyanine 5.5
<b>Conjugation Information</b>	PE/Cyanine5.5 is designed to be excited by the Blue (488 nm), Green (532 nm) and yellow-green (561 nm) lasers and detected using an optical filter centered near 690 nm (e.g., a 690/50 nm bandpass filter).
<b>Storage Buffer</b>	Phosphate buffered solution, pH 7.2, containing 0.09% stabilizer.

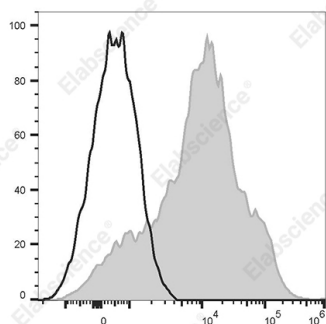
### Applications

### Recommended usage

FCM

Each lot of this antibody is quality control tested by flow cytometric analysis. **The amount of the reagent is suggested to be used 5 μL of antibody per test (million cells in 100 μL staining volume or per 100 μL of whole blood).** Please check your vial before the experiment. Since applications vary, the appropriate dilutions must be determined for individual use.

### Data



Human peripheral blood lymphocytes are stained with PE/Cyanine5.5 Anti-Human CD38 Antibody[HIT2] (filled gray histogram) or PE/Cyanine5.5 Mouse IgG1, κ Isotype Control (empty black histogram).

### Preparation & Storage

<b>Storage</b>	Keep as concentrated solution. This product can be stored at 2-8°C for 24 months. Please protected from prolonged exposure to light and do not freeze.
<b>Shipping</b>	Ice bag

### Antigen Information

<b>Alternate Names</b>	2'-phospho-ADP-ribosyl cyclase;2'-phospho-cyclic-ADP-ribose transferase;ADP-ribosyl cyclase 1;ADP-ribosyl cyclase/cyclic ADP-ribose hydrolase 1;ADPRC 1;CD38;Cyclic ADP-ribose hydrolase 1;T10;cADPr hydrolase 1
------------------------	--

### For Research Use Only

**Uniprot ID**

P28907

**Gene ID**

952

**Background**

CD38 is a 45 kD type II transmembrane glycoprotein also known as T10. It is an ADP-ribosyl hydrolase expressed at variable levels on hematopoietic cells and in some non-hematopoietic tissues (such as brain, muscles, and kidney). In humans, it is expressed at high levels on plasma cells and activated T and B cells. By functioning as both a cyclase and a hydrolase, CD38 mediates lymphocyte activation, adhesion, and the metabolism of cADPR and NAADP. CD31 is the ligand of CD38.