

# SASH1 Polyclonal Antibody

Catalog Number: E-AB-53327



**Note:** Centrifuge before opening to ensure complete recovery of vial contents.

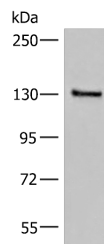
## Description

|                     |   |
|---------------------|---|
| <b>Reactivity</b>   | Human, Mouse                                |
| <b>Immunogen</b>    | Synthetic peptide of human SASH1            |
| <b>Host</b>         | Rabbit                                      |
| <b>Isotype</b>      | IgG   |
| <b>Purification</b> | Antigen affinity purification               |
| <b>Conjugation</b>  | Unconjugated                                |
| <b>Formulation</b>  | PBS with 0.05% NaN3 and 40% Glycerol, pH7.4 |

## Applications Recommended Dilution

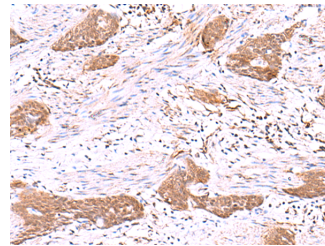
|              |                |
|--------------|----------------|
| <b>WB</b>    | 1:500-1:2000   |
| <b>IHC</b>   | 1:30-1:150     |
| <b>ELISA</b> | 1:5000-1:10000 |

## Data



Western blot analysis of Human urinary bladder tissue lysate using SASH1 Polyclonal Antibody at dilution of 1:300

**Observed Mw: Refer to figures**  
**Calculated Mw: 137 kDa**



Immunohistochemistry of paraffin-embedded Human esophagus cancer tissue using SASH1 Polyclonal Antibody at dilution of 1:30 (x200)

## Preparation & Storage

**Storage** Store at -20°C. Avoid freeze / thaw cycles.

## Background

This gene encodes a scaffold protein involved in the TLR4 signaling pathway that may stimulate cytokine production and endothelial cell migration in response to invading pathogens. The encoded protein has also been described as a potential tumor suppressor that may negatively regulate proliferation, apoptosis, and invasion of cancer cells, and reduced expression of this gene has been observed in multiple human cancers. Mutations in this gene may be associated with abnormal skin pigmentation in human patients.

## For Research Use Only

A Reliable Research Partner in Life Science and Medicine

Toll-free: 1-888-852-8623

Web: [www.elabscience.com](http://www.elabscience.com)

Tel: 1-832-243-6086

Email: [techsupport@elabscience.com](mailto:techsupport@elabscience.com)

Fax: 1-832-243-6017