

## Recombinant CD5/Cluster of Differentiation 5 Monoclonal Antibody

catalog number: **AN300514P**

**Note:** Centrifuge before opening to ensure complete recovery of vial contents.

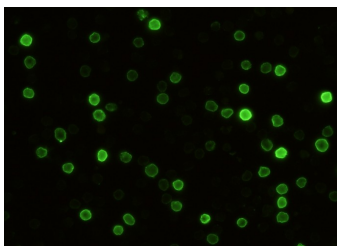
### Description

<b>Reactivity</b>	Mouse
<b>Immunogen</b>	Recombinant Mouse CD5/Cluster of Differentiation 5 protein
<b>Host</b>	Rabbit
<b>Isotype</b>	IgG
<b>Clone</b>	9C9
<b>Purification</b>	Protein A
<b>Buffer</b>	0.2 µm filtered solution in PBS

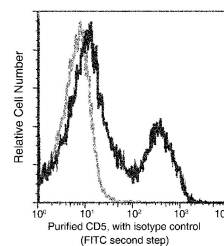
### Applications Recommended Dilution

<b>ICC/IF</b>	1:20-1:100
<b>FCM</b>	1:25-1:100

### Data



Immunofluorescence analysis of Mouse CD5 in Mouse Spleen cells. Cells were fixed with 4% PFA, blocked with 10% serum, and incubated with rabbit anti-mouse CD5 monoclonal antibody (1:60) at 37°C 1 hour. Then cells were stained with the Alexa Fluor® 488-conjugated Goat Anti-rabbit IgG secondary antibody (green). Positive staining was localized to cell membrane.



Flow cytometric analysis of Mouse CD5 expression on BABL/c splenocytes. Cells were stained with purified anti-Mouse CD5, then a FITC-conjugated second step antibody. The fluorescence histograms were derived from gated events with the forward and side light-scatter characteristics of intact cells.

### Preparation & Storage

<b>Storage</b>	This antibody can be stored at 2°C-8°C for one month without detectable loss of activity. Antibody products are stable for twelve months from date of receipt when stored at -20°C to -80°C. Preservative-Free. Avoid repeated freeze-thaw cycles.
<b>Shipping</b>	Ice bag

### Background

CD5 is a 67 kD protein, also known as Lyt-1, Ly-1, T1, Tp67, or Ly-12. It is a member of the scavenger receptor cysteine-rich protein superfamily (SRCR) and primarily expressed on thymocytes, T cells, and B-1 cells. Although mature  $\alpha/\beta$  T cells express high levels of CD5, very few  $\gamma/\delta$  T cells express this antigen. The interaction of CD5 with CD72, gp35-37, TCR, or BCR is involved in T and B cell activation.

### For Research Use Only