

Recombinant LC3A Monoclonal Antibody

catalog number: **AN301015L**

Note: Centrifuge before opening to ensure complete recovery of vial contents.

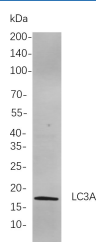
Description

Reactivity	Human;Mouse;Rat
Immunogen	Recombinant Human LC3A protein
Host	Rabbit
Isotype	IgG, κ
Clone	B766
Purification	Protein A
Buffer	PBS, 50% glycerol, 0.05% Proclin 300, 0.05% protein protectant.

Applications

Applications	Recommended Dilution
IHC	1:200-1:1000
WB	1:1000-1:5000
IF	1:200-1:1000
ELISA	1:5000-1:20000
IP	1:50-1:200,

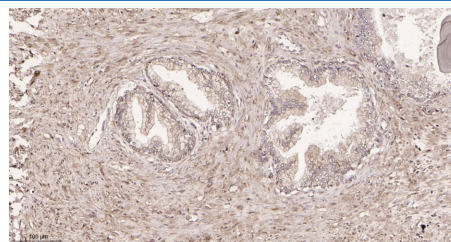
Data



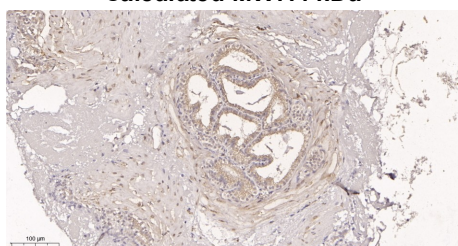
Western Blot with Recombinant LC3A Monoclonal Antibody at dilution of 1:1000 dilution. Lane A: Mouse brain cells.

Observed-MW:16 kDa

Calculated-MW:14 kDa



Immunohistochemistry of paraffin-embedded human prostate tissue using Recombinant LC3A Monoclonal Antibody at dilution of 1:200.



Immunohistochemistry of paraffin-embedded mouse prostate tissue using Recombinant LC3A Monoclonal Antibody at dilution of 1:200.

Preparation & Storage

Storage	Store at -20°C Valid for 12 months. Avoid freeze / thaw cycles.
Shipping	Ice bag

Background

For Research Use Only

Toll-free: 1-888-852-8623
Web: www.elabscience.com

Tel: 1-832-243-6086
Email: techsupport@elabscience.com

Fax: 1-832-243-6017

Rev. V1.2

MAP1A and MAP1B are microtubule-associated proteins which mediate the physical interactions between microtubules and components of the cytoskeleton. MAP1A and MAP1B each consist of a heavy chain subunit and multiple light chain subunits. The protein encoded by this gene is one of the light chain subunits and can associate with either MAP1A or MAP1B. Two transcript variants encoding different isoforms have been found for this gene. The expression of variant 1 is suppressed in many tumor cell lines, suggesting that may be involved in carcinogenesis.