

CHAT Polyclonal Antibody

catalog number: E-AB-70028

Note: Centrifuge before opening to ensure complete recovery of vial contents.

Description

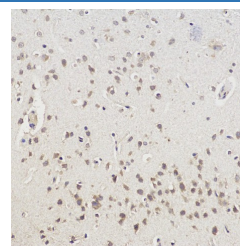
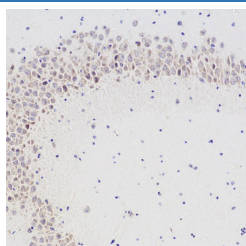
Reactivity	Mouse;Rat
Immunogen	KLH conjugated Synthetic peptide corresponding to Mouse CHAT
Host	Rabbit
Isotype	IgG
Purification	Affinity purification
Conjugation	Unconjugated
buffer	Phosphate buffered solution, pH 7.4, containing 0.05% stabilizer, 1% protein protectant and 50% glycerol.

Applications

Recommended Dilution

IHC	1:100-1:500
------------	-------------

Data



Immunohistochemistry analysis of paraffin-embedded mouse brain using CHAT Polyclonal Antibody at dilution of 1:300. Immunohistochemistry analysis of paraffin-embedded Rat brain using CHAT Polyclonal Antibody at dilution of 1:100.

Preparation & Storage

Storage	Store at -20°C Valid for 12 months. Avoid freeze / thaw cycles.
Shipping	The product is shipped with ice pack, upon receipt, store it immediately at the temperature recommended.

Background

This gene encodes an enzyme which catalyzes the biosynthesis of the neurotransmitter acetylcholine. This gene product is a characteristic feature of cholinergic neurons, and changes in these neurons may explain some of the symptoms of Alzheimer's disease. Polymorphisms in this gene have been associated with Alzheimer's disease and mild cognitive impairment. Mutations in this gene are associated with congenital myasthenic syndrome associated with episodic apnea. Multiple transcript variants encoding different isoforms have been found for this gene, and some of these variants have been shown to encode more than one isoform.

For Research Use Only