

Recombinant Human DPP4/DPPIV/CD26 Protein (Fc Tag)

Catalog Number: PKSH033696



Note: Centrifuge before opening to ensure complete recovery of vial contents.

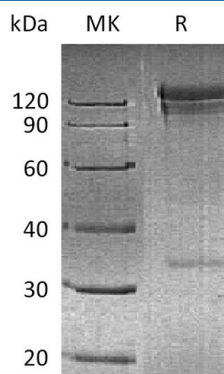
Description

| | |
|---------------------|----------------------------|
| Species | Human |
| Mol_Mass | 111.7 kDa |
| Accession | P27487 |
| Bio-activity | Not validated for activity |

Properties

| | |
|-----------------------|--|
| Purity | > 95 % as determined by reducing SDS-PAGE. |
| Endotoxin | < 1.0 EU per µg of the protein as determined by the LAL method. |
| Storage | Store at < -20°C, stable for 6 months. Please minimize freeze-thaw cycles. |
| Shipping | This product is provided as liquid. It is shipped at frozen temperature with blue ice/gel packs. Upon receipt, store it immediately at < - 20°C. |
| Formulation | Supplied as a 0.2 µm filtered solution of PBS, pH7.4. |
| Reconstitution | Not Applicable |

Data



> 95 % as determined by reducing SDS-PAGE.

Background

CD26 is a signal-anchor for type II membrane protein that belongs to the peptidase S9B family. CD26 is expressed specifically in lymphatic vessels but not in blood vessels in the skin; small intestine; esophagus; ovary; breast and prostate glands. It acts as a positive regulator of T-cell coactivation; by binding at least ADA; CAV1; IGF2R; and PTPRC. Its binding to CAV1 and CARD11 induces T-cell proliferation and NF-kappa-B activation in a T-cell receptor/CD3-dependent manner. Its interaction with ADA also regulates lymphocyte-epithelial cell adhesion. In association with FAP is involved in the pericellular proteolysis of the extracellular matrix (ECM); the migration and invasion of endothelial cells into the ECM. It may be involved in the promotion of lymphatic endothelial cells adhesion; migration and tube formation. When overexpressed; it enhanced cell proliferation; a process inhibited by GPC3. It acts also as a serine exopeptidase with a dipeptidyl peptidase activity that regulates various physiological processes by cleaving peptides in the circulation; including many chemokines; mitogenic growth factors; neuropeptides and peptide hormones.

For Research Use Only

A Reliable Research Partner in Life Science and Medicine
Tel:400-999-2100

Email:techsupport@elabscience.cn

Web:www.elabscience.cn

Rev. V3.2