

# CCDC47 Polyclonal Antibody

catalog number: E-AB-18732

**Note:** Centrifuge before opening to ensure complete recovery of vial contents.

## Description

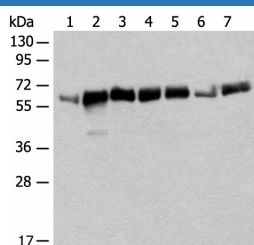
<b>Reactivity</b>	Human;Mouse;Rat
<b>Immunogen</b>	Fusion protein of human CCDC47
<b>Host</b>	Rabbit
<b>Isotype</b>	IgG
<b>Purification</b>	Antigen affinity purification
<b>Conjugation</b>	Unconjugated
<b>buffer</b>	Phosphate buffered solution, pH 7.4, containing 0.05% stabilizer and 50% glycerol.

## Applications

## Recommended Dilution

<b>WB</b>	1:500-1:2000
<b>IHC</b>	1:30-1:150

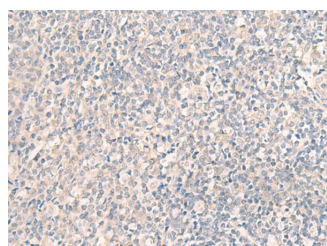
## Data



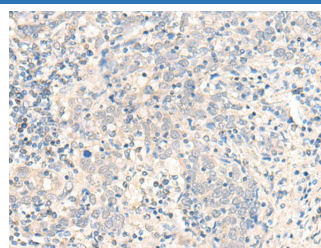
Western blot analysis of Mouse heart tissue Mouse liver tissue NIH/3T3 cell Human bladder transitional cell carcinoma grade 2-3 tissue A172 cell Human placenta tissue K562 cell lysates using CCDC47 Polyclonal Antibody at dilution of 1:350

**Observed-MV:Refer to figures**

**Calculated-MV:56 kDa**



Immunohistochemistry of paraffin-embedded Human tonsil tissue using CCDC47 Polyclonal Antibody at dilution of 1:25( $\times 200$ )



Immunohistochemistry of paraffin-embedded Human cervical cancer tissue using CCDC47 Polyclonal Antibody at dilution of 1:25( $\times 200$ )

## Preparation & Storage

<b>Storage</b>	Store at -20°C Valid for 12 months. Avoid freeze / thaw cycles.
<b>Shipping</b>	The product is shipped with ice pack,upon receipt,store it immediately at the temperature recommended.

## Background

## For Research Use Only

# CCDC47 Polyclonal Antibody

catalog number: E-AB-18732



The coiled-coil domain is a common protein motif that is often involved in protein oligomerization and is found in proteins such as transcription factors and intermediate filaments. The CCDC47 gene maps to chromosome 17 at 17q23.3. Little is known about this single-pass membrane protein except that the coiled-coil domain is within the cytosolic domain near the carboxy terminus.

## For Research Use Only

A Reliable Research Partner in Life Science and Medicine  
Tel: 400-999-2100

Email: [techsupport@elabscience.cn](mailto:techsupport@elabscience.cn)

Web: [www.elabscience.cn](http://www.elabscience.cn)

Rev. V1.7