

Recombinant Phospho-Cyclin B1 (Ser126) Monoclonal Antibody

catalog number: **AN300987L**

Note: *Centrifuge before opening to ensure complete recovery of vial contents.*

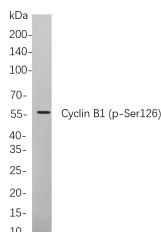
Description

| | |
|---------------------|--|
| Reactivity | Human |
| Immunogen | A synthetic peptide corresponding to residues around (Ser126) of Human Phospho-Cyclin B1 |
| Host | Rabbit |
| Isotype | IgG, κ |
| Clone | B738 |
| Purification | Protein A |
| Buffer | PBS, 50% glycerol, 0.05% Proclin 300, 0.05% protein protectant. |

Applications

| Applications | Recommended Dilution |
|--------------|----------------------|
| IHC | 1:500-1:2000 |
| WB | 1:1000-1:5000 |
| IF | 1:200-1:1000 |
| ELISA | 1:5000-1:20000 |
| IP | 1:50-1:200, |

Data



Western Blot with Recombinant Phospho-Cyclin B1 (Ser126)

Monoclonal Antibody at dilution of 1:1000 dilution. Lane A:

Hela cells.

Observed-MW:55 kDa

Calculated-MW:48 kDa

Preparation & Storage

| | |
|-----------------|---|
| Storage | Store at -20°C Valid for 12 months. Avoid freeze / thaw cycles. |
| Shipping | Ice bag |

Background

The protein encoded by this gene is a regulatory protein involved in mitosis. The gene product complexes with p34(cdc2) to form the maturation-promoting factor (MPF). Two alternative transcripts have been found, a constitutively expressed transcript and a cell cycle-regulated transcript, that is expressed predominantly during G2/M phase. The different transcripts result from the use of alternate transcription initiation sites.

For Research Use Only

Toll-free: 1-888-852-8623
Web: www.elabscience.com

Tel: 1-832-243-6086
Email: techsupport@elabscience.com

Fax: 1-832-243-6017

Rev. V1.2