

CRABP1 Polyclonal Antibody

Catalog Number: E-AB-18631



Note: Centrifuge before opening to ensure complete recovery of vial contents.

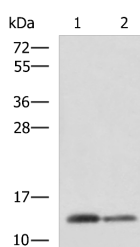
Description

Reactivity	Human, Mouse, Rat
Immunogen	Fusion protein of human CRABP1
Host	Rabbit
Isotype	IgG
Purification	Antigen affinity purification
Conjugation	Unconjugated
Formulation	PBS with 0.05% NaN3 and 40% Glycerol, pH7.4

Applications Recommended Dilution

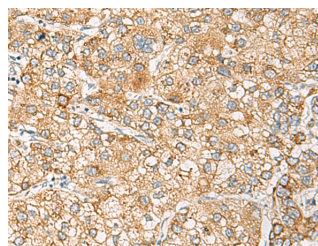
WB	1:1000-1:5000
IHC	1:100-1:300
ELISA	1:5000-1:10000

Data



Western blot analysis of Human breast tissue and Human thyroid tissue lysates using CRABP1 Polyclonal Antibody at dilution of 1:2000

Observed MW: Refer to figures
Calculated Mw: 16 kDa



Immunohistochemistry of paraffin-embedded Human liver cancer tissue using CRABP1 Polyclonal Antibody at dilution of 1:120 (x200)

Preparation & Storage

Storage Store at -20°C. Avoid freeze / thaw cycles.

Background

This gene encodes a specific binding protein for a vitamin A family member and is thought to play an important role in retinoic acid-mediated differentiation and proliferation processes. It is structurally similar to the cellular retinol-binding proteins, but binds only retinoic acid at specific sites within the nucleus, which may contribute to vitamin A-directed differentiation in epithelial tissue.

For Research Use Only

A Reliable Research Partner in Life Science and Medicine

Toll-free: 1-888-852-8623

Web: www.elabscience.com

Tel: 1-832-243-6086

Email: techsupport@elabscience.com

Fax: 1-832-243-6017