

PE Anti-Human IL-1 beta Antibody[CRM56]

Catalog Number: GFH00842D

Note: Centrifuge before opening to ensure complete recovery of vial contents.

Description

Reactivity	Human
Host	Mouse
Isotype	Mouse IgG1, κ
Clone No.	CRM56
Isotype Control	PE Mouse IgG1, κ Isotype Control[MOPC-21] [Product GFH09792D]
Conjugation	PE
Conjugation Information	PE is designed to be excited by the Blue (488 nm), Green (532 nm) and Yellow-Green (561 nm) lasers and detected using an optical filter centered near 575 nm (e.g., a 585/42 nm bandpass filter).
Storage Buffer	Phosphate buffered solution, pH 7.2, containing 0.09% sodium azide.

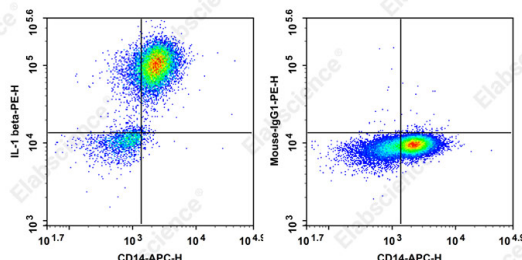
Applications

Recommended usage

FCM

Each lot of this antibody is quality control tested by flow cytometric analysis. **The amount of the reagent is suggested to be used 5 μL of antibody per test (million cells in 100 μL staining volume or per 100 μL of whole blood).** Please check your vial before the experiment. Since applications vary, the appropriate dilutions must be determined for individual use.

Data



Staining of blood peripheral blood mononuclear cells stimulated with LPS in the presence of Brefeldin A for 4 hours Anti-Human CD14 APC followed by intracellularly Anti-Human IL-1 beta PE.

Preparation & Storage

Storage	Keep as concentrated solution. This product can be stored at 2-8°C for 12 months. Please protected from prolonged exposure to light and do not freeze.
Shipping	Ice bag

Antigen Information

Alternate Names	IL-1 beta;IL1B;IL1F2;IL-1;IL-1beta抗体;beta流式抗体;人IL-1 beta;人IL-1 beta流式抗体;GFH00842
Uniprot ID	P01584

For Research Use Only

Gene ID

3553

Background

The CRM56 antibody reacts with human and baboon interleukin-1 beta; (IL-1 beta). IL-1 beta is a 17 kDa factor secreted primarily by monocytes. IL-1 has effects on T-helper cells, inducing IL-2 secretion and expression of IL-2 receptors. IL-1 has effects on B cells, promoting cell proliferation and immunoglobulin synthesis.