

Recombinant Human HO1 protein (His tag)

Catalog Number:PDEH100201



Note: Centrifuge before opening to ensure complete recovery of vial contents.

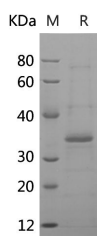
Description

Synonyms	Heme Oxygenase 1;HO-1 HMOX1;HO;HO1
Species	Human
Expression Host	E.coli
Sequence	Met 1-Met 288
Accession	P09601
Calculated Molecular Weight	31.6 kDa
Observed molecular weight	35 kDa
Tag	N-His

Properties

Purity	> 95 % as determined by reducing SDS-PAGE.
Endotoxin	Please contact us for more information.
Storage	Generally, lyophilized proteins are stable for up to 12 months when stored at -20 to -80°C. Reconstituted protein solution can be stored at 4-8°C for 2-7 days. Aliquots of reconstituted samples are stable at < -20°C for 3 months.
Shipping	This product is provided as lyophilized powder which is shipped with ice packs.
Formulation	Lyophilized from sterile PBS, pH 7.4. Normally 5 % - 8 % trehalose, mannitol and 0.01% Tween80 are added as protectants before lyophilization. Please refer to the specific buffer information in the printed manual.
Reconstitution	Please refer to the printed manual for detailed information.

Data



> 95 % as determined by reducing SDS-PAGE.

Background

Heme Oxygenase 1 (HO-1) is an enzyme in endoplasmic reticulum that belongs to the heme oxygenase family. HO-1 cleaves the heme ring at the alpha methene bridge to form Biliverdin. Biliverdin is subsequently converted to Bilirubin by Biliverdin reductase. In physiological state, the highest activity of HO-1 is found in the spleen, where senescent erythrocytes are sequestered and destroyed. HO-1 activity is highly inducible by its substrate heme and by various non-heme substances such as heavy metals, bromobenzene, endotoxin, oxidizing agents and UVA. HO-1 is involved in the regulation of cardiovascular function and response to a variety of stressors. Defects in HO-1 are the cause of Heme Oxygenase 1 deficiency, resulting in marked erythrocyte fragmentation and intravascular hemolysis, coagulation abnormalities, endothelial damage, and iron deposition in renal and hepatic tissues.

For Research Use Only

A Reliable Research Partner in Life Science and Medicine

Toll-free: 1-888-852-8623

Web: www.elabscience.com

Tel: 1-832-243-6086

Email: techsupport@elabscience.com

Fax: 1-832-243-6017