

SUPV3L1 Polyclonal Antibody

Catalog Number: E-AB-62230



Note: Centrifuge before opening to ensure complete recovery of vial contents.

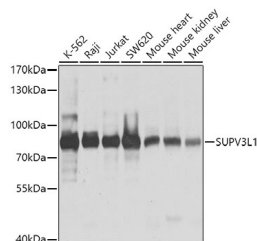
Description

Reactivity	Human, Mouse, Rat
Immunogen	Recombinant fusion protein of human SUPV3L1 (NP_003162.2).
Host	Rabbit
Isotype	IgG
Purification	Affinity purification
Conjugation	Unconjugated
Formulation	PBS with 0.02% sodium azide, 50% glycerol, pH7.3.

Applications Recommended Dilution

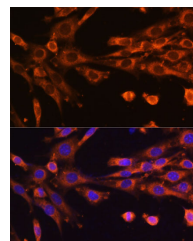
WB	1:1000-1:4000
IF	1:50-1:200

Data



Western blot analysis of extracts of various cell lines using SUPV3L1 Polyclonal Antibody at dilution of 1:1000.

Observed Mw:88kDa
Calculated Mw:87kDa



Immunofluorescence analysis of NIH-3T3 cells using SUPV3L1 Polyclonal Antibody at dilution of 1:100 (40x lens). Blue: DAPI for nuclear staining.

Preparation & Storage

Storage Store at -20°C. Avoid freeze / thaw cycles.

Background

SUPV3L1 (Suv3 Like RNA Helicase) is a Protein Coding gene. Diseases associated with SUPV3L1 include Uveoparotid Fever and Neuropathy, Hereditary Motor And Sensory, Russe Type. Gene Ontology (GO) annotations related to this gene include RNA binding.

For Research Use Only

A Reliable Research Partner in Life Science and Medicine

Toll-free: 1-888-852-8623

Web: www.elabscience.com

Tel: 1-832-243-6086

Email: techsupport@elabscience.com

Fax: 1-832-243-6017