

# OTUD6A Polyclonal Antibody

Catalog Number:E-AB-17894



**Note:** Centrifuge before opening to ensure complete recovery of vial contents.

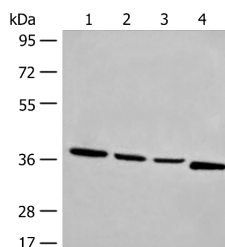
## Description

<b>Reactivity</b>	Human, Mouse
<b>Immunogen</b>	Synthetic peptide of human OTUD6A
<b>Host</b>	Rabbit
<b>Isotype</b>	IgG
<b>Purification</b>	Antigen affinity purification
<b>Conjugation</b>	Unconjugated
<b>Formulation</b>	PBS with 0.05% NaN <sub>3</sub> and 40% Glycerol,pH7.4

## Applications Recommended Dilution

<b>WB</b>	1:500-1:2000
<b>ELISA</b>	1:5000-1:10000

## Data



Western blot analysis of Human breast cancer tissue TM4 231 and Jurkat cell lysates using OTUD6A Polyclonal Antibody at dilution of 1:550  
**Observed MW:Refer to figures**  
**Calculated Mw:33 kDa**

## Preparation & Storage

**Storage** Store at -20°C. Avoid freeze / thaw cycles.

## Background

Deubiquitinating enzymes (DUBs; see MIM 603478) are proteases that specifically cleave ubiquitin (MIM 191339) linkages, negating the action of ubiquitin ligases. DUBA2 belongs to a DUB subfamily characterized by an ovarian tumor (OTU) domain.

## For Research Use Only

A Reliable Research Partner in Life Science and Medicine

Toll-free: 1-888-852-8623

Web: [www.elabscience.com](http://www.elabscience.com)

Tel: 1-832-243-6086

Email: [techsupport@elabscience.com](mailto:techsupport@elabscience.com)

Fax: 1-832-243-6017