

# Recombinant Human PIGR/SC protein (His tag)

Catalog Number:PDEH100152



**Note:** Centrifuge before opening to ensure complete recovery of vial contents.

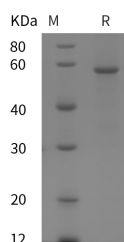
## Description

<b>Synonyms</b>	Polymeric Immunoglobulin Receptor;PIgR;Poly-Ig Receptor;PIGR
<b>Species</b>	Human
<b>Expression Host</b>	E.coli
<b>Sequence</b>	Lys 19-Ala 561
<b>Accession</b>	P01833
<b>Calculated Molecular Weight</b>	59.6 kDa
<b>Observed molecular weight</b>	59 kDa
<b>Tag</b>	N-His

## Properties

<b>Purity</b>	> 95 % as determined by reducing SDS-PAGE.
<b>Endotoxin</b>	Please contact us for more information.
<b>Storage</b>	Generally, lyophilized proteins are stable for up to 12 months when stored at -20 to -80°C. Reconstituted protein solution can be stored at 4-8°C for 2-7 days. Aliquots of reconstituted samples are stable at < -20°C for 3 months.
<b>Shipping</b>	This product is provided as lyophilized powder which is shipped with ice packs.
<b>Formulation</b>	Lyophilized from sterile PBS, pH 7.4. Normally 5 % - 8 % trehalose, mannitol and 0.01% Tween80 are added as protectants before lyophilization. Please refer to the specific buffer information in the printed manual.
<b>Reconstitution</b>	Please refer to the printed manual for detailed information.

## Data



> 95 % as determined by reducing SDS-PAGE.

## Background

Polymeric immunoglobulin receptor, also known as PIGR, is a member of the immunoglobulin superfamily and a Fc receptor. The ectodomain of this receptor consists of five units with homology to the variable units of immunoglobulins and a transmembrane region, which also has some homology to certain immunoglobulin variable regions. PIGR is expressed on several glandular epithelia including those of liver and breast. The deduced amino-acid sequence has a length of 764 residues and shows an overall similarity of 56% and 64% with the rabbit and rat counterpart. PIGR mediates transcellular transport of polymeric immunoglobulin molecules, and thus facilitates the secretion of IgA and IgM. During this process, a cleavage occurs that separates the extracellular (known as the secretory component) from the transmembrane segment of PIGR.

## For Research Use Only

A Reliable Research Partner in Life Science and Medicine

Toll-free: 1-888-852-8623

Web: [www.elabscience.com](http://www.elabscience.com)

Tel: 1-832-243-6086

Email: [techsupport@elabscience.com](mailto:techsupport@elabscience.com)

Fax: 1-832-243-6017