

# Recombinant Human IL-20RA/IL-20R1 Protein (His Tag)

Catalog Number: PKSH032576



**Note:** Centrifuge before opening to ensure complete recovery of vial contents.

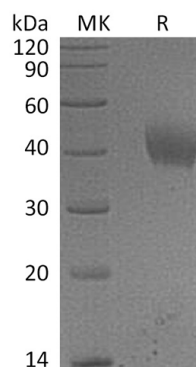
## Description

<b>Species</b>	Human
<b>Mol_Mass</b>	26.3 kDa
<b>Accession</b>	Q9UHF4
<b>Bio-activity</b>	Not validated for activity

## Properties

<b>Purity</b>	> 95 % as determined by reducing SDS-PAGE.
<b>Endotoxin</b>	< 1.0 EU per µg of the protein as determined by the LAL method.
<b>Storage</b>	Generally, lyophilized proteins are stable for up to 12 months when stored at -20 to -80 °C. Reconstituted protein solution can be stored at 4-8°C for 2-7 days. Aliquots of reconstituted samples are stable at < -20°C for 3 months.
<b>Shipping</b>	This product is provided as lyophilized powder which is shipped with ice packs.
<b>Formulation</b>	Lyophilized from a 0.2 µm filtered solution of 20mM PB, 150mM NaCl, pH 7.4. Normally 5% - 8% trehalose, mannitol and 0.01% Tween 80 are added as protectants before lyophilization. Please refer to the specific buffer information in the printed manual.
<b>Reconstitution</b>	Please refer to the printed manual for detailed information.

## Data



> 95 % as determined by reducing SDS-PAGE.

## Background

Interleukin-20 Receptor Subunit  $\alpha$  (IL20RA) is a single-pass type I membrane protein that is a member of the type II cytokine receptor family. IL20RA is synthesized as a 553 amino acid glycoprotein precursor containing a 29 amino acid signal peptide; a 221 amino acid extracellular domain with two fibronectin type-III domains; a 24 amino acid transmembrane region; and a 279 amino acid intracellular domain. IL20RA is widely expressed with highest levels found in skin and testis and high levels in brain. IL20RA forms a heterodimer with IL20RB; and the complex serves as a receptor for IL19; IL20 and IL24. IL20RA also forms a heterodimer with the unique and specific receptor IL10RB and functions as the receptor for IL26.

## For Research Use Only

A Reliable Research Partner in Life Science and Medicine  
Tel: 400-999-2100

Email: [techsupport@elabscience.cn](mailto:techsupport@elabscience.cn)

Web: [www.elabscience.cn](http://www.elabscience.cn)

Rev. V3.5