

DCBLD2 Polyclonal Antibody

Catalog Number: E-AB-11139



Note: Centrifuge before opening to ensure complete recovery of vial contents.

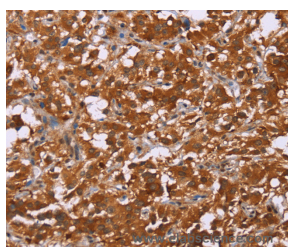
Description

Reactivity	Human, Mouse, Rat
Immunogen	Recombinant protein of human DCBLD2
Host	Rabbit
Isotype	IgG
Purification	Affinity purification
Conjugation	Unconjugated
Formulation	PBS with 0.05% sodium azide and 50% glycerol, PH7.4

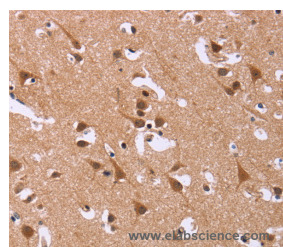
Applications Recommended Dilution

IHC	1:100-1:300
------------	-------------

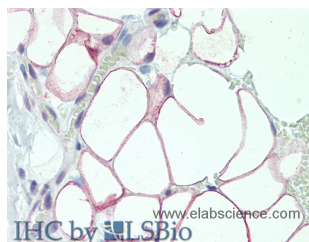
Data



Immunohistochemistry of paraffin-embedded Human thyroid cancer tissue using DCBLD2 Polyclonal Antibody at dilution 1:50



Immunohistochemistry of paraffin-embedded Human brain tissue using DCBLD2 Polyclonal Antibody at dilution 1:50



Immunohistochemistry of paraffin-embedded Adipose Tissue tissue using DCBLD2 Polyclonal Antibody at dilution of 1:50 (Elabscience® Product Detected by Lifespan).

Preparation & Storage

Storage Store at -20°C. Avoid freeze / thaw cycles.

Background

CLCP1 (CUB, LCCL and coagulation factor V/VIII-homology domains protein 1), also known as DCBLD2 (discoidin, CUB and LCCL domain containing 2) or ESDN, is a 775 amino acid single-pass type I membrane protein that contains one CUB domain, one LCCL domain and one F5/8 type C domain. Expressed at high levels in heart, testis and skeletal muscle, CLCP1 is thought to regulate vascular smooth muscle cell (VSMC) proliferation and remodeling and may be

For Research Use Only

A Reliable Research Partner in Life Science and Medicine

Toll-free: 1-888-852-8623

Web: www.elabscience.com

Tel: 1-832-243-6086

Email: techsupport@elabscience.com

Fax: 1-832-243-6017

DCBLD2 Polyclonal Antibody

Catalog Number: E-AB-11139



involved in the transformation and metastasis of various cancers, such as metastatic lung cancer and gastric carcinoma.

For Research Use Only

A Reliable Research Partner in Life Science and Medicine

Toll-free: 1-888-852-8623

Tel: 1-832-243-6086

Fax: 1-832-243-6017

Web: www.elabscience.com

Email: techsupport@elabscience.com