

## Recombinant MTAP Monoclonal Antibody

catalog number: **AN301807L**

**Note:** Centrifuge before opening to ensure complete recovery of vial contents.

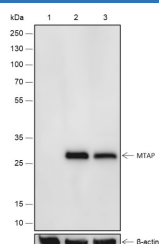
### Description

<b>Reactivity</b>	Human;Mouse
<b>Immunogen</b>	Recombinant human MTAP fragment
<b>Host</b>	Rabbit
<b>Isotype</b>	IgG, $\kappa$
<b>Clone</b>	A519
<b>Purification</b>	Protein A purified
<b>Buffer</b>	PBS, 50% glycerol, 0.05% Proclin 300, 0.05% protein protectant.

### Applications Recommended Dilution

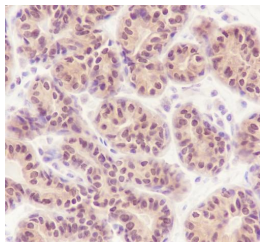
<b>WB</b>	1:1000-1:3000
<b>IHC</b>	1:50-1:100

### Data

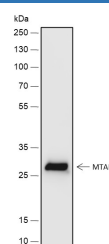


Western Blot with MTAP Monoclonal Antibody at dilution of 1:3000. Lane 1: A549 (Negative control), Lane 2: HT-29, Lane 3: HeLa

**Observed-MW:31 kDa**  
**Calculated-MW:31 kDa**



Immunohistochemistry of paraffin-embedded Human breast using MTAP Monoclonal Antibody at dilution of 1:100.



Western Blot with MTAP Monoclonal Antibody at dilution of 1:3000. Lane 1: NIH/3T3

**Observed-MW:31 kDa**  
**Calculated-MW:31 kDa**

### Preparation & Storage

<b>Storage</b>	Store at -20°C Valid for 12 months. Avoid freeze / thaw cycles.
<b>Shipping</b>	Ice bag

### Background

### For Research Use Only

Toll-free: 1-888-852-8623  
Web: [www.elabscience.com](http://www.elabscience.com)

Tel: 1-832-243-6086  
Email: [techsupport@elabscience.com](mailto:techsupport@elabscience.com)

Fax: 1-832-243-6017

Rev. V1.1

MTAP is an enzyme essential for the salvage pathway for both adenine and methionine synthesis. MTAP catalyzes the cleavage of 5'-methylthioadenosine into adenine and 5-methylthio-D-ribose-1-phosphate. Adenine is then used to generate AMP whereas 5-methylthio-D-ribose-1-phosphate is converted into methionine. MTAP is expressed in all normal cells and tissues, although frequently lost in different human tumors including pancreatic adenocarcinoma, neuroendocrine tumors, non-small cell lung carcinoma and breast carcinoma, thereby implicating its potential function as a tumor suppressor.

---

**For Research Use Only**

Toll-free: 1-888-852-8623

Web: [www.elabscience.com](http://www.elabscience.com)

Tel: 1-832-243-6086

Email: [techsupport@elabscience.com](mailto:techsupport@elabscience.com)

Fax: 1-832-243-6017

Rev. V1.1