

GPR142 Polyclonal Antibody

catalog number: E-AB-18039

Note: Centrifuge before opening to ensure complete recovery of vial contents.

Description

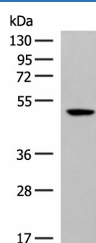
Reactivity	Human
Immunogen	Synthetic peptide of human GPR142
Host	Rabbit
Isotype	IgG
Purification	Antigen affinity purification
Conjugation	Unconjugated
buffer	Phosphate buffered solution, pH 7.4, containing 0.05% stabilizer and 50% glycerol.

Applications

Recommended Dilution

WB	1:500-1:2000
-----------	--------------

Data



Western blot analysis of HeLa cell lysate using GPR142

Polyclonal Antibody at dilution of 1:400

Observed-MV: Refer to figures

Calculated-MV: 51 kDa

Preparation & Storage

Storage	Store at -20°C Valid for 12 months. Avoid freeze / thaw cycles.
Shipping	The product is shipped with ice pack, upon receipt, store it immediately at the temperature recommended.

Background

GPR142 is a member of the rhodopsin family of G protein-coupled receptors (GPRs).

For Research Use Only