

Recombinant Mouse Pleiotrophin/PTN/HB-GAM Protein (His Tag)

Catalog Number: PKSM041292



Note: Centrifuge before opening to ensure complete recovery of vial contents.

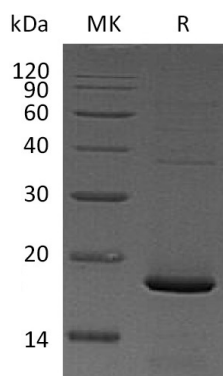
Description

Species	Mouse
Mol_Mass	16.1 kDa
Accession	P63089
Bio-activity	Not validated for activity

Properties

Purity	> 95 % as determined by reducing SDS-PAGE.
Endotoxin	< 1.0 EU per µg of the protein as determined by the LAL method.
Storage	Generally, lyophilized proteins are stable for up to 12 months when stored at -20 to -80 °C. Reconstituted protein solution can be stored at 4-8°C for 2-7 days. Aliquots of reconstituted samples are stable at < -20°C for 3 months.
Shipping	This product is provided as lyophilized powder which is shipped with ice packs.
Formulation	Lyophilized from a 0.2 µm filtered solution of PBS, pH 7.4. Normally 5% - 8% trehalose, mannitol and 0.01% Tween 80 are added as protectants before lyophilization. Please refer to the specific buffer information in the printed manual.
Reconstitution	Please refer to the printed manual for detailed information.

Data



Background

HB-GAM belongs to the pleiotrophin family. During embryonic and early postnatal development, HB-GAM is expressed in the central and peripheral nervous system and also in several non-neural tissues, notably lung, kidney, gut and bone. While in the adult central nervous system, it is expressed in an activity-dependent manner in the hippocampus where it can suppress long term potentiation induction. HB-GAM has a low expression in other areas of the adult brain, but it can be induced by ischemic insults, or targeted neuronal damage in the entorhinal cortex or in the substantia nigra pars compacta. It is structurally related to midkine and retinoic acid induced heparin-binding protein and has a high affinity for heparin. HB-GAM binds anaplastic lymphoma kinase (ALK) which induces MAPK pathway activation, an important step in the anti-apoptotic signaling of PTN and regulation of cell proliferation. It also functions as a secreted growth factor and induces neurite outgrowth and which is mitogenic for fibroblasts, epithelial, and endothelial cells.

For Research Use Only

A Reliable Research Partner in Life Science and Medicine
Tel: 400-999-2100

Email: techsupport@elabscience.cn

Web: www.elabscience.cn

Rev. V3.2