

# Recombinant Human HAPLN1 Protein (His Tag)

Catalog Number:PKSH031687



**Note:** Centrifuge before opening to ensure complete recovery of vial contents.

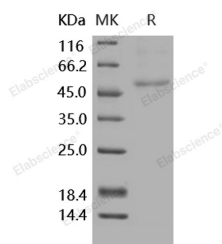
## Description

|                                    |               |
|------------------------------------|---------------|
| <b>Synonyms</b>                    | CRTL1         |
| <b>Species</b>                     | Human         |
| <b>Expression Host</b>             | HEK293 Cells  |
| <b>Sequence</b>                    | Met 1-Asn 354 |
| <b>Accession</b>                   | NP_001875.1   |
| <b>Calculated Molecular Weight</b> | 40 kDa        |
| <b>Observed molecular weight</b>   | 52 kDa        |
| <b>Tag</b>                         | C-His         |

## Properties

|                       |                                                                                                                                                                                                                                       |
|-----------------------|---------------------------------------------------------------------------------------------------------------------------------------------------------------------------------------------------------------------------------------|
| <b>Purity</b>         | > 90 % as determined by reducing SDS-PAGE.                                                                                                                                                                                            |
| <b>Endotoxin</b>      | < 1.0 EU per µg of the protein as determined by the LAL method.                                                                                                                                                                       |
| <b>Storage</b>        | Generally, lyophilized proteins are stable for up to 12 months when stored at -20 to -80°C. Reconstituted protein solution can be stored at 4-8°C for 2-7 days. Aliquots of reconstituted samples are stable at < -20°C for 3 months. |
| <b>Shipping</b>       | This product is provided as lyophilized powder which is shipped with ice packs.                                                                                                                                                       |
| <b>Formulation</b>    | Lyophilized from sterile PBS, pH 7.4<br>Normally 5 % - 8 % trehalose, mannitol and 0.01% Tween80 are added as protectants before lyophilization.<br>Please refer to the specific buffer information in the printed manual.            |
| <b>Reconstitution</b> | Please refer to the printed manual for detailed information.                                                                                                                                                                          |

## Data



> 90 % as determined by reducing SDS-PAGE.

## Background

Hyaluronan (HA) is a high MW glycosaminoglycan significantly involved in the formation and stability of extracellular matrix via its association with specific HA-binding proteins. HAPLN1, also known as CRTL1 (Cartilage Link Protein 1, cLP) and link protein, is a member of HA-binding protein (hyaladherins) family, and contains a common structural domain of about 100 amino acids that is termed a Link module with two  $\alpha$ -helices and two antiparallel  $\beta$ -sheets. HAPLN1/CRTL1 stabilizes the interaction between hyaluronan (HA) and versican, two extracellular matrix components essential for cardiac development. Link module superfamily can be divided into three subgroups, and the HAPLN family are C domain-type proteins that have an extended structure with one N-terminal V-type Ig-like domain followed by two link modules. In cartilage, aggrecan forms - cLP stabilized aggregates with HA that provides the tissue with its load

## For Research Use Only

A Reliable Research Partner in Life Science and Medicine

Toll-free: 1-888-852-8623

Web: [www.elabscience.com](http://www.elabscience.com)

Tel: 1-832-243-6086

Email: [techsupport@elabscience.com](mailto:techsupport@elabscience.com)

Fax: 1-832-243-6017

# Recombinant Human HAPLN1 Protein (His Tag)

Catalog Number:PKSH031687



bearing properties. HAPLN1 is a component of follicular matrix, was shown to enhance cumulus-oocyte complex (COC) expansion in vitro. HAPLN1 may promote periovulatory granulosa cell survival, which would facilitate their differentiation into luteal cells.

---

## For Research Use Only

A Reliable Research Partner in Life Science and Medicine

Toll-free: 1-888-852-8623

Web: [www.elabscience.com](http://www.elabscience.com)

Tel: 1-832-243-6086

Email: [techsupport@elabscience.com](mailto:techsupport@elabscience.com)

Fax: 1-832-243-6017