

Recombinant EPHB4 Monoclonal Antibody

catalog number: **AN301515L**

Note: Centrifuge before opening to ensure complete recovery of vial contents.

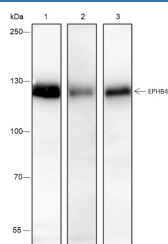
Description

Reactivity	Human;
Immunogen	Recombinant human EPHB4 fragment
Host	Rabbit
Isotype	IgG, κ
Clone	A214
Purification	Protein A purified
Buffer	PBS, 50% glycerol, 0.05% Proclin 300, 0.05% protein protectant.

Applications

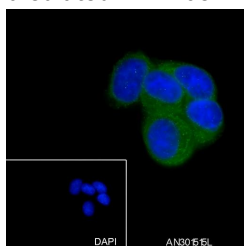
Applications	Recommended Dilution
WB	1:500-1:1000
IF	1:50
FCM	1:50-1:100

Data

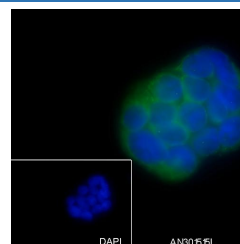


Western Blot with EPHB4 Monoclonal Antibody at dilution of 1:1000. Lane 1: HT-29, Lane 2: HUVEC, Lane 3: MCF-7

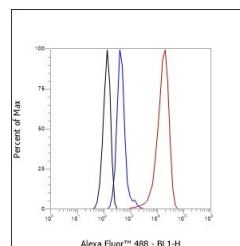
Observed-MW:120 kDa
Calculated-MW:108 kDa



Immunofluorescent analysis of (100% Ice-cold methanol) fixed MCF-7 cells using anti-EPHB4 Monoclonal Antibody at dilution of 1:50.



Immunofluorescent analysis of (100% Ice-cold methanol) fixed HT-29 cells using anti-EPHB4 Monoclonal Antibody at dilution of 1:50.



Flow cytometric analysis of human EPHB4 expression on HT-29 cells. Cells were stained with purified anti-Human EPHB4, then a Alexa Fluor 488-conjugated second step antibody. The histogram were derived from events with the forward and side light-scatter characteristics of intact cells.

Preparation & Storage

Storage	Store at -20°C Valid for 12 months. Avoid freeze / thaw cycles.
Shipping	Ice bag

Background

For Research Use Only

Toll-free: 1-888-852-8623
Web: www.elabscience.com

Tel: 1-832-243-6086
Email: techsupport@elabscience.com

Fax: 1-832-243-6017

Rev. V1.0

EPHB4 together with its cognate ligand/functional ligand EFNB2 they are involved in the regulation of cell adhesion and migration, and play a central role in heart morphogenesis, angiogenesis and blood vessel remodeling and permeability. EPHB4-mediated forward signaling controls cellular repulsion and segregation from EFNB2-expressing cells.