

## PE/Elab Fluor® 594 Anti-Human CD45RA Antibody[HI100]

**Catalog Number:** E-AB-F1052P

**Note:** Centrifuge before opening to ensure complete recovery of vial contents.

### Description

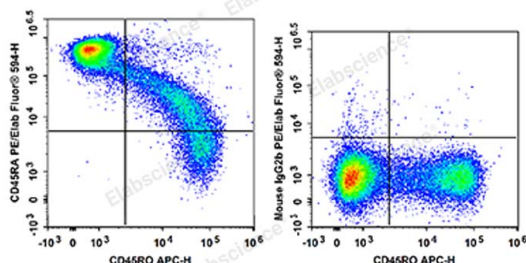
|                                |   |
|--------------------------------|---|
| <b>Reactivity</b>              | Human   |
| <b>Host</b>                    | Mouse   |
| <b>Isotype</b>                 | Mouse IgG2b, κ  |
| <b>Clone No.</b>               | HI100   |
| <b>Isotype Control</b>         | PE/Elab Fluor® 594 Mouse IgG2b, κ Isotype Control[MPC-11] [Product E-AB-F09812P]  |
| <b>Conjugation</b>             | PE/Elab Fluor® 594  |
| <b>Conjugation Information</b> | PE/Elab Fluor® 594 is designed to be excited by the blue (488 nm), Green (532 nm) and yellow-green (561 nm) lasers and detected using an optical filter centered near 620 nm (e.g., a 610/20 nm bandpass filter). |
| <b>Storage Buffer</b>          | Phosphate buffered solution, pH 7.2, containing 0.09% stabilizer and 1% protein protectant.   |

### Applications

### Recommended usage

|            |   |
|------------|---|
| <b>FCM</b> | Each lot of this antibody is quality control tested by flow cytometric analysis. <b>The amount of the reagent is suggested to be used 5 µL of antibody per test (million cells in 100 µL staining volume or per 100 µL of whole blood).</b> Please check your vial before the experiment. Since applications vary, the appropriate dilutions must be determined for individual use. |
|------------|---|

### Data



Human peripheral blood lymphocytes are stained with APC

Anti-Human CD45RO Antibody and PE/Elab Fluor® 594

Anti-Human CD45RA Antibody (Left). Lymphocytes are

stained with APC Anti-Human CD45RO Antibody and

PE/Elab Fluor® 594 Mouse IgG2b, κ Isotype Control (Right).

### Preparation & Storage

|                 |   |
|-----------------|---|
| <b>Storage</b>  | Keep as concentrated solution.<br>This product can be stored at 2-8°C for 12 months. Please protected from prolonged exposure to light and do not freeze. |
| <b>Shipping</b> | Ice bag   |

### Antigen Information

|                        |  |
|------------------------|--|
| <b>Alternate Names</b> | CD45;L-CA;Ly-5;Ptpcr;Receptor-type tyrosine-protein phosphatase C;T200 |
|------------------------|--|

### For Research Use Only

Toll-free: 1-888-852-8623  
Web: [www.elabscience.com](http://www.elabscience.com)

Tel: 1-832-243-6086  
Email: [techsupport@elabscience.com](mailto:techsupport@elabscience.com)

Fax: 1-832-243-6017

Rev. V1.6

**Uniprot ID**

P08575

**Gene ID**

5788

**Background**

CD45RA is a 205-220 kD single chain type I glycoprotein. It is an exon 4 splice variant of the tyrosine phosphatase CD45. The CD45RA isoform is expressed on resting/naïve T cells, medullary thymocytes, B cells and monocytes. CD45RA enhances both T cell receptor and B cell receptor signaling. CD45 non-covalently associates with lymphocyte phosphatase-associated phosphoprotein (LPAP) on T and B lymphocytes. CD45 has been reported to be associated with several other cell surface antigens including CD1, CD2, CD3, and CD4. CD45 has also been reported to bind galectin-1. CD45 isoform expression can change in response to cytokines.