

Recombinant Human KLK2 protein (His tag)

Catalog Number:PDEH100290



Note: Centrifuge before opening to ensure complete recovery of vial contents.

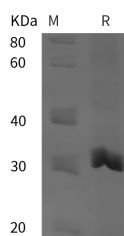
Description

Synonyms	Signal Transduction;Cell biology;Cancer
Species	Human
Expression Host	E.coli
Sequence	Ile 25-Pro 261
Accession	P20151
Calculated Molecular Weight	26.0 kDa
Observed molecular weight	31 kDa
Tag	N-His

Properties

Purity	> 95 % as determined by reducing SDS-PAGE.
Endotoxin	Please contact us for more information.
Storage	Generally, lyophilized proteins are stable for up to 12 months when stored at -20 to -80°C. Reconstituted protein solution can be stored at 4-8°C for 2-7 days. Aliquots of reconstituted samples are stable at < -20°C for 3 months.
Shipping	This product is provided as lyophilized powder which is shipped with ice packs.
Formulation	Lyophilized from sterile PBS, pH 7.4. Normally 5 % - 8 % trehalose, mannitol and 0.01% Tween80 are added as protectants before lyophilization. Please refer to the specific buffer information in the printed manual.
Reconstitution	Please refer to the printed manual for detailed information.

Data



> 95 % as determined by reducing SDS-PAGE.

Background

Kallikrein-2 (KLK2) is a secreted serine protease that belongs to the peptidase S1 family of Kallikrein subfamily. KLK2 contains 1 peptidase S1 domain. It is highly expressed in the human prostate gland. KLK2 can cleave Met-Lys and Arg-Ser bonds in kininogen to release Lys-bradykinin, but Preferential cleavages of Arg-I-Xaa bonds in small molecule substrates. It also highly selective action to release kallidin (lysyl-bradykinin) from kininogen involves hydrolysis of Met-I-Xaa or Leu-I-Xaa. KLK2 is inhibited by serpins such as protein C inhibitor, antichymotrypsin, and plasminogen. KLK2 is considered to be a biomarker for prostate cancer.

For Research Use Only

A Reliable Research Partner in Life Science and Medicine

Toll-free: 1-888-852-8623

Web: www.elabscience.com

Tel: 1-832-243-6086

Email: techsupport@elabscience.com

Fax: 1-832-243-6017