

RPS19BP1 Polyclonal Antibody

Catalog Number:E-AB-64510



Note: Centrifuge before opening to ensure complete recovery of vial contents.

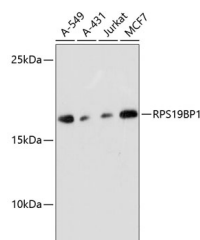
Description

| | |
|---------------------|---|
| Reactivity | Human,Mouse,Rat |
| Immunogen | Recombinant fusion protein of human RPS19BP1 (NP_919307.1). |
| Host | Rabbit |
| Isotype | IgG |
| Purification | Affinity purification |
| Conjugation | Unconjugated |
| Formulation | PBS with 0.02% sodium azide, 50% glycerol, pH7.3. |

Applications Recommended Dilution

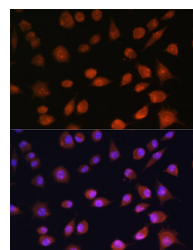
| | |
|-----------|--------------|
| WB | 1:500-1:2000 |
| IF | 1:50-1:200 |

Data



Western blot analysis of extracts of various cell lines using RPS19BP1 Polyclonal Antibody at dilution of 1:3000.

Observed Mw:20kDa
Calculated Mw:15kDa



Immunofluorescence analysis of L929 cells using RPS19BP1 Polyclonal Antibody at dilution of 1:100.
Blue: DAPI for nuclear staining.

Preparation & Storage

Storage Store at -20°C. Avoid freeze / thaw cycles.

Background

RPS19BP1 (Ribosomal Protein S19 Binding Protein 1) is a Protein Coding gene. Diseases associated with RPS19BP1 include Inhibited Female Orgasm and Amyotrophic Lateral Sclerosis 1. Among its related pathways are Cellular response to heat stress and Cellular Senescence (REACTOME). Gene Ontology (GO) annotations related to this gene include enzyme binding.

For Research Use Only

A Reliable Research Partner in Life Science and Medicine

Toll-free: 1-888-852-8623

Web: www.elabscience.com

Tel: 1-832-243-6086

Email: techsupport@elabscience.com

Fax: 1-832-243-6017